

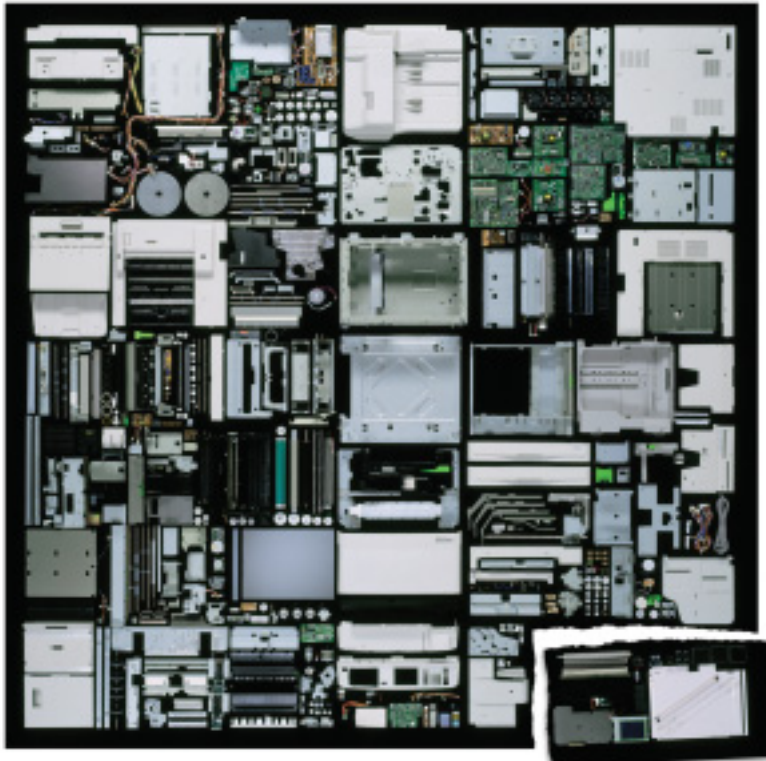
“3R” Policy

Reduce, Reuse, Recycle

We employ a “3R” approach to steadily reduce environmental impact by recycling resources.

Copiers

The full array of nearly 500 parts that go into a single Konica Sitis copier is shown fully disassembled below. We can reuse or recycle approximately 92% of them.



Parts not yet reusable or recyclable shown in detached segment

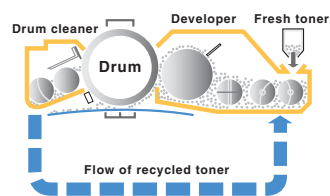


Copier Recycling Line

Our copier recycling line is dedicated to the recycling of used copiers. Here, post-use copiers are carefully disassembled by hand one by one to collect parts and materials. These items are either reused in new copiers or recycled into their various component materials.

Zero Toner Waste Inside Copiers

Konica’s proprietary Toner Recycling System detects any unused toner on the drum, collects it and then returns it automatically to the toner cartridge for reuse. Prior to this innovation, up to 20% of toner was routinely left unused in the copier, and had to be collected by service personnel during maintenance checks. This system eliminates waste toner on the customer side.



[Increasing Reusable Parts]

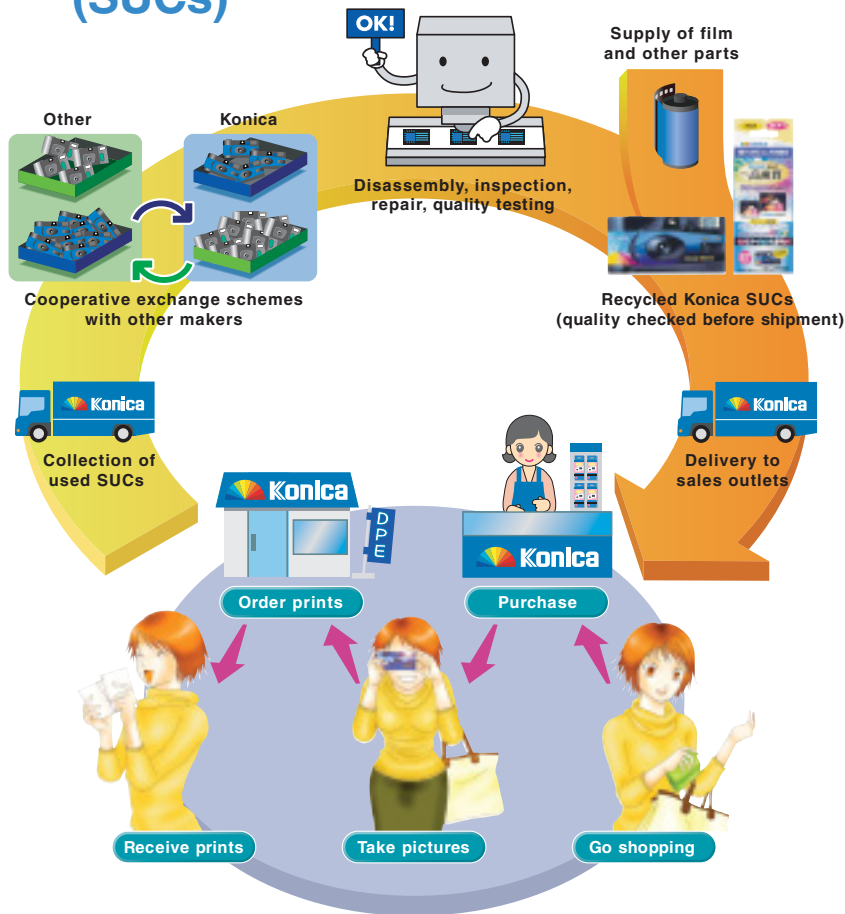
Years from now, Konica copiers now under development will return to our recycling line after our customers have finished using them. Based on eco-conscious design guidelines developed internally, we are trying to ensure that greater reusability and recyclability are built into our copiers at the development stage. For example, to facilitate reuse of parts, only motors and other components that may be used in next-generation copiers are certified as “standard reusable parts.”

[Closed-Loop Materials Recycling]

The plastic parts in Konica copiers are first pulverized into a fine powder and blended with new plastic chips to form new copier parts. This kind of closed-loop materials recycling system helps to reduce waste while also helping to conserve natural resources.



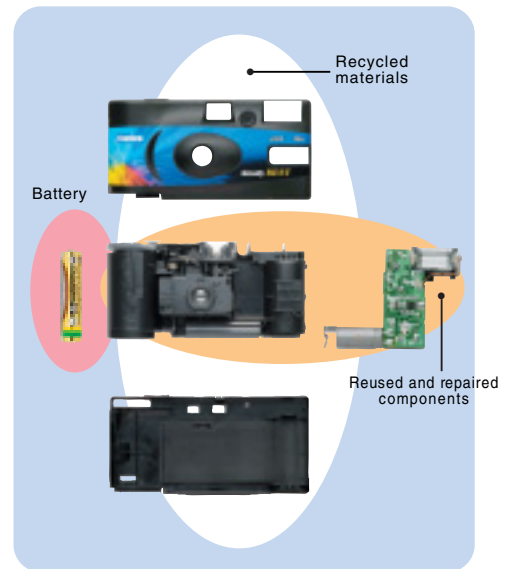
Konica Film-In Single-Use Cameras (SUCs)



Although Konica Film-in SUCs are “Single-Use” cameras for customers, the fact is that used SUCs are collected throughout Japan and reappear in new SUCs after undergoing Konica’s recycling and reuse system, including procedures such as sorting, separation, disassembly and a strict quality check.

Konica has been collecting SUCs since 1990 and reformed the recycling system as pictured to the left, to reduce their environmental impact. The requirements of this system are taken into consideration when developing SUCs, and as a result, the number of reusable parts is a percentage of the total number of parts is 90% and the recycling rate is over 98%.

[Structure of Film-in SUCs]



Containers

We also collect, reuse and recycle toner cartridges for copiers, and tablet chemical cartridges for photo-processing equipment.

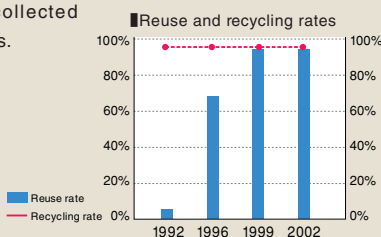
[Toner cartridge for Sitis copiers]



[Tablet cartridges for QD-21 automatic processor]

[A Large Increase in Reuse Ratio] [Reusable and Recyclable Designs]

Major achievements of the past decade include a sharp increase in the reuse ratio and a recycling rate of nearly 100% for collected SUCs.



Use of standardized parts

Except for the front cover and flash unit, all Konica Goody series of SUCs are made from standardized parts. This makes these products substantially easier to reuse and recycle.

Materials integration

All plastic parts in our SUCs are produced from the same type of polystyrene to ease material recycling (except the lens and flash panel). Material use is standardized as much as possible.

