

# DocNet FAX Module

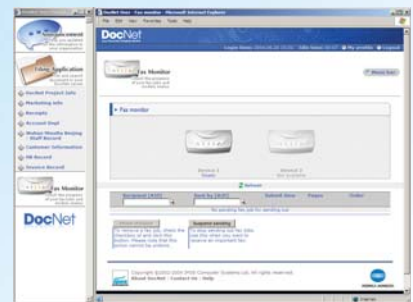


DocNet FAX module gives you more fax control than you ever have. It acts as a centralized hub for fax messages distribution and allocation, allowing you to forward fax messages to any email addresses, fax numbers, filing applications as well as email notification and standard printout. Facsimile, it's all about legacy integration.

## Why I need a Fax on my Document Imaging System?

Fax is very commonly used among business organizations. Although email became very popular and it has revolutionized the way that people communicate, fax is still the most commonly used way for document communication, like signed contract fax back. However, to control the papers in your fax machine, you need a more comprehensive document imaging solution like DocNet.

With DocNet FAX module, fax from multi-functional products and PC fax are fast and efficient.



## Comprehensive Fax Receiving Rules to Control Incoming Fax

One of the most headache problems associated with fax is the junk fax received in your fax machine everyday. Unlike junk mail which you could delete them without any lost; junk fax would at least waste one piece of paper every time you see them. Also, distribution of fax message is another problem. Manual distribution means confidential information could be read by your colleagues and such manual operation flow of fax message would mean a lack of efficiency.

With DocNet FAX module, fax sender is identified by Station Identifier (TSI/CSID) and different rules can be applied on a recognized sender. You may file the fax from a sender to a filing application directly; forward it to multiple fax numbers; send it to multiple email addresses; print it directly to a MFP; notify multiple email addresses and you can even delete it without reading it. Best of all, there is no limitation to the number of rules that you can create and it gives you the maximum flexibility!



## Auditable Fax Log

Do you have any idea of who has faxed what file to whom? What is the utilization of your fax line? Want to know when a fax is sent to your business partner? With DocNet FAX module, all these problems are resolved by using the fax log feature. The fax logs record which user has sent what document to whom at what time and how many fax activities are there so you can plan for an extra fax line at the right time.

## Dual Fax Lines Supported

Too many fax jobs to send and receive? Now you can centralize the fax queue and have fax job in and out at its maximum speed.



## Fax Out is Simple

You can fax out document with or without filing. Document in filing queue or filed document can be sent to multiple destinations with one click. Even more, you can configure auto-fax filing queue so that any document images sent to that queue would be faxed out to pre-defined numbers automatically. Furthermore you can key in fax number at multi-functional product's control panels to fax out ad-hoc fax, even without the faxing out capability in your MFP.



## Product Specifications

### FAX module

- Fax environment setup, modem setup and testing
- Fax receiving rules for 1: Filing to application; 2: Send multiple email addresses; 3: Forward to multiple faxes; 4: Delete; 5: Notify multiple emails; and 6: Print to multiple MFPs
- Junk fax control
- Fax device monitor, re-priority and fax job removal
- Suspend fax out queue
- Fax log
- Auto fax filing queue for one-touch faxing in MFPs
- Ad-hoc fax in MFP
- Fax out in filing queue
- Fax out for filed document

### System requirements

One V.90 or K56-flex compatible fax-modem device attached to the DocNet server, maximum two fax-modems are supported.

### Ordering information

DocNet FAX module

Please contact your DocNet sales representative.

FAX module is an optional one available for DocNet server 2.0.0 or above. Once purchased this option, Internet connection to DocNet license server is needed to activate the functionality of this option.

**DocNet**  
your Document Imaging Solution



**KONICA MINOLTA**

The essentials of imaging

Enquiry Hotline: 2565-2111

<http://konicaminolta.com.hk>