



KONICA MINOLTA

COLOR READER CR-10 Plus

Simple operation shows the color difference between your target and samples in an instant.

Simple basic operation. Just three steps:
Switch on → Measure target → Measure samples

Lightweight and compact!

Large easy-to-read display!



■ Useful functions available with PC application

The PC application stored in the CR-10 Plus body helps you manage data more effectively. (Note: PC is required to use PC application.)

1 Measurement data can be stored in the CR-10 Plus

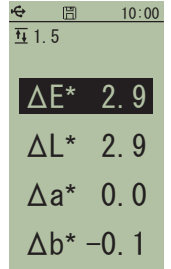
The CR-10 Plus can be set to store measurement data (up to 1,000 measurement data including target data) in its memory. (Once this setting has been made, it is not necessary to use the PC application to set it again.)

2 Pass/fail judgment

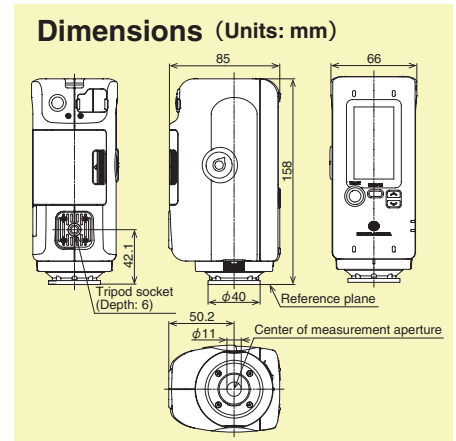
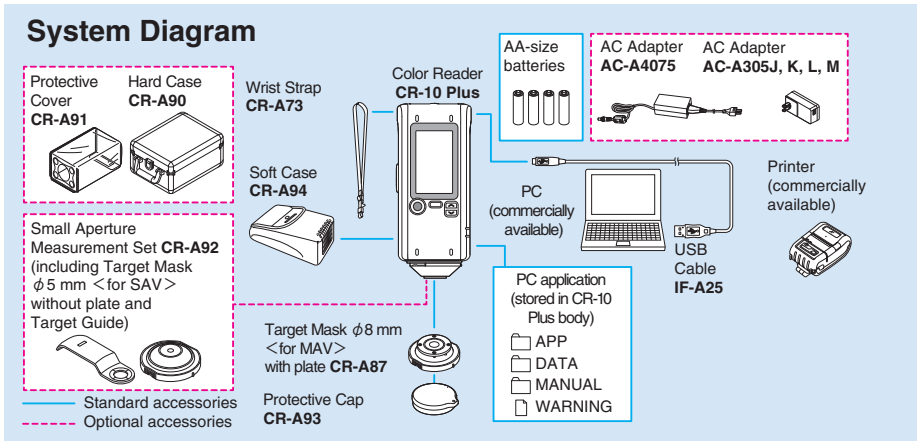
You can set a tolerance on the CR-10 Plus. Then, if the color difference exceeds the tolerance, the CR-10 Plus warns you that the sample exceeds tolerance by highlighting the over-tolerance value in the display and giving a different sound than for measurements that pass, so you can know immediately whether the sample color has passed or failed. (Once this setting has been made, it is not necessary to use the PC application to set it again.)

3 Small Aperture Measurement Set (Optional accessory)

A $\phi 5$ mm target mask is also available. It includes a Target Guide for positioning the instrument for measurements.



Display example



Main Specifications

Model	Color Reader CR-10 Plus
Illumination/viewing system	8°:di (8°illumination angle/diffuse viewing: specular component included) (conforms to DIN 5033 Teil 7, JIS Z 8722 condition d, ISO 7724/1, CIE No. 15, ASTM E 1164)
Detector	Silicon photocells (6 pcs.)
Display range	L*: 1 to 100
Light source	Pulsed xenon lamps
Measurement time	Approx. 1 sec.
Battery performance	Approx. 2,000 measurement at 10-sec. intervals when using alkaline-manganese batteries
Measurement area	Approx. $\phi 8$ mm, approx. $\phi 5$ mm (optional accessory) (*Optional $\phi 5$ mm mask does not conform to DIN 5033 Teil 7 and CIE No. 15.)
Repeatability	Standard deviation within ΔE^*ab 0.1 (when a white calibration plate is measured 30 times at 10-second intervals)
Display languages	English, Simplified Chinese, Japanese
Interface	USB2.0
Observer	10° Standard Observer
Illuminant	D65
Display data	Color difference, average (up to 10 times), Pass/fail judgment
Color different formula	$\Delta(L^*a^*b^*)$, $\Delta(L^*C^*H^*)$, ΔE^*ab (CIE 1976)
Data memory	Target data, Samples data(up to 1,000 in total)
Pass/fail item	ΔE^*ab , $\Delta(L^*a^*b^*)$, $\Delta(L^*C^*H^*)$
Operation temperature/ humidity range	0 to 40°C, relative humidity 85% or less (at 35°C) with no condensation
Storage temperature/ humidity range	-20 to 40°C, relative humidity 85% or less (at 35°C) with no condensation
Power	4 AA-size alkaline dry batteries or nickel-metal-hydrate rechargeable batteries, USB bus power or special AC Adapter
Size (W x H x D)	66 x 158 x 85 mm
Weight	420 g (without batteries)

PC system requirement

OS Windows® 10 Pro 32bit, 64bit
Windows® 11 Pro
(English, Simplified Chinese, or Japanese)

- The hardware of the computer system to be used must meet or exceed the recommended system requirements for compatible OS being used.
- One USB2.0 port is necessary.

- The specifications and appearance shown herein are subject to change without notice.
- KONICA MINOLTA, the Konica Minolta logo and symbol mark, and "Giving Shape to Ideas" are registered trademarks or trademarks of KONICA MINOLTA, INC.
- Other company names and product names used herein are trademarks or registered trademarks of their respective companies.



SAFETY PRECAUTIONS

For correct use and for your safety, be sure to read the instruction manual before using the instrument.

- Always connect the instrument to the specified power supply voltage. Improper connection may cause a fire or electric shock.
- Be sure to use the specified batteries. Using improper batteries may cause a fire or electric shock.

KONICA MINOLTA, INC.	Osaka, Japan	PHONE: (888)473-2656 (in USA), +1(201)236-4300 (outside USA)	FAX: +1(201)785-2480	E-Mail: service.us@konicaminolta.com
Konica Minolta Sensing Americas, Inc.	New Jersey, U.S.A.	PHONE: +31(0)30 248-1193		E-Mail: info.benelux@seu.konicaminolta.eu
Konica Minolta Sensing Europe B.V.	European HQ/ BENELUX	PHONE: +49(0)89 4357 156 0		E-Mail: info.germany@seu.konicaminolta.eu
	München, Germany	PHONE: +33(0)1 80 11 10 70		E-Mail: info.france@seu.konicaminolta.eu
	French Office	PHONE: +44(0)1925 467300		E-Mail: info.uk@seu.konicaminolta.eu
	UK Office	PHONE: +39 02849488.00		E-Mail: info.italy@seu.konicaminolta.eu
	Italian Office	PHONE: +41(0)43 322-9800		E-Mail: info.switzerland@seu.konicaminolta.eu
	Swiss Office	PHONE: +46(0)31 7099464		E-Mail: info.nordic@seu.konicaminolta.eu
	Nordic Office	PHONE: +48(0)71 73452-11		E-Mail: info.poland@seu.konicaminolta.eu
	Polish Office	PHONE: +86-(0)21-6057-1089		E-Mail: hcn_sensing@gcp.konicaminolta.com
Konica Minolta (CHINA) Investment Ltd.	SE Sales Division	PHONE: +86-(0)10-8522 1551		E-Mail: hcn_sensing@gcp.konicaminolta.com
	Beijing Office	PHONE: +86-(0)20-3826 4220		E-Mail: hcn_sensing@gcp.konicaminolta.com
	Guangzhou Office	PHONE: +86-(0)23-6773 4988		E-Mail: hcn_sensing@gcp.konicaminolta.com
	Chongqing Office	PHONE: +86-(0)23-6794 9512		E-Mail: hcn_sensing@gcp.konicaminolta.com
	Qingdao Office	PHONE: +86-(0)532-8079 1871		E-Mail: hcn_sensing@gcp.konicaminolta.com
	Wuhan Office	PHONE: +86-(0)27-6885 0586		E-Mail: hcn_sensing@gcp.konicaminolta.com
	Shenzhen Office	PHONE: +86-(0)755-2868 7535		E-Mail: hcn_sensing@gcp.konicaminolta.com
	Xiamen Office	PHONE: +86-(0)592-7107 399		E-Mail: hcn_sensing@gcp.konicaminolta.com
Konica Minolta Sensing Singapore Pte. Ltd.	Singapore	PHONE: +65 6563-5533		E-Mail: ssg@gcp.konicaminolta.com
Konica Minolta Sensing Korea Co., Ltd.	Korean HQ	PHONE: +82(0)2-523-9726		E-Mail: se.korea@konicaminolta.com
	Cheonan Office	PHONE: +82(0)41-556-9726		E-Mail: se.korea@konicaminolta.com

Addresses and telephone/fax numbers and e-mail address are subject to change without notice. For the latest contact information, please refer to KONICA MINOLTA Worldwide Offices web page:

<https://konicaminolta.com/instruments/network>