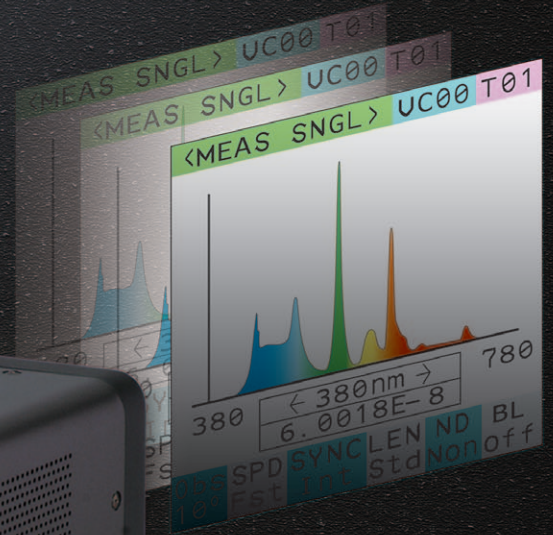




KONICA MINOLTA

# Spectroradiometer **CS-2000/2000A**

## High-End Spectroradiometer with High Accuracy and High Stability



# Capable of highly accurate and stable measurements!

The CS-2000 and CS-2000A accurately measure luminance and chromaticity thanks to an optical design and signal processing found only at Konica Minolta.

This includes thoroughly eliminating mechanical and electrical noise factors in the design to enable high repeatability and rapid-interval measurements from super-faint luminances as low as 0.0005 cd/m<sup>2</sup>.

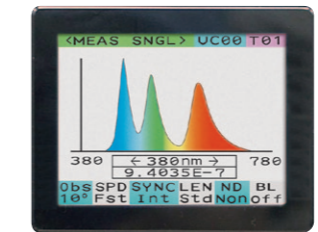
Moreover, both models ensure half-bandwidths of 5 nm or less, which is recommended for accurate color measurement (JIS Z 8724-1997, CIE122-1996), across the whole wavelength spectrum.

Repeatability 0.15%  
Accuracy (Chromaticity)  
x : ±0.0015  
y : ±0.001  
\* CS-2000A : 0.05 cd/m<sup>2</sup>  
CS-2000 : 0.1 cd/m<sup>2</sup>

## Highly visible, easy to use

Highly visible color LCD and easy-to-use operating panel

Example display of OELD measurement

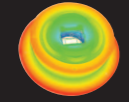


Users can interactively select the required functions.



## Technology

In designing the sensor at the core of the CS-2000/2000A, Konica Minolta meticulously analyzed and optimized the optical components in order to prevent any impact on measurement results due to heat strain.



Thermal profile of the sensor block



Example application: Measurement of an OELD under development

## USB support

Easy PC connection via USB



## New RS-232C support

RS-232C communication at a max. 115,200 bps

The CS-2000 and CS-2000A support high baud rate RS-232C communication. Both models can be incorporated into automated lines over a 5 or 10 m cable (sold separately).

\* CS-S10w does not support RS-232C or wireless communications.

## Wireless communication support

Wireless communication is possible via an RS-Bluetooth conversion adapter.



\* Operation is not guaranteed with all communication adapters on the market.

## Measurement of super-low luminances

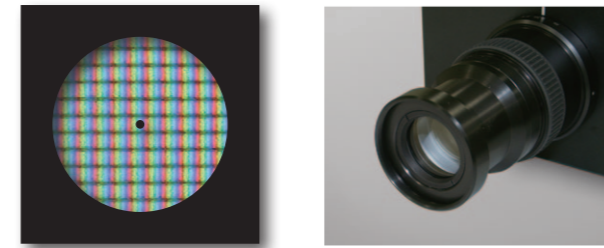
### Wide luminance measurement range (CS-2000A)

Luminance can be measured between 0.0005 cd/m<sup>2</sup> and 50M cd/m<sup>2</sup>.\*  
\* When the CS-A34 ND filter is attached.



## Close-up lens

### Close-up lens for measurement of even tinier areas (Optional accessory)



■ Measuring distance vs. measuring area (Units: mm)

Measuring distance		Measuring angle		
		1°	0.2°	0.1°
When a close-up lens is attached	55.0	Ø1.00	Ø0.20	Ø0.10
	70.9	Ø1.39	Ø0.28	Ø0.14
	350	Ø5.00	Ø1.00	Ø0.50
	500	Ø7.78	Ø1.56	Ø0.78
	1,000	Ø16.66	Ø3.33	Ø1.67
	2,000	Ø34.18	Ø6.84	Ø3.42

\* The measuring distance is the distance from the objective lens or the end of the metal frame of the close-up lens.

## PWM light sources

### Stable measurement ensured

- Internally synchronized measurement**  
Flashing frequency can be freely set by numerical input.
- Externally synchronized measurement**  
Vertical synchronization signals can be input to the instrument over a cable connection.
- Prolonged exposure measurement**  
For high-luminance measurements, variations in luminance during unsynchronized readings can be reduced by using the multi-integration mode to prolong exposure without saturating the sensor.

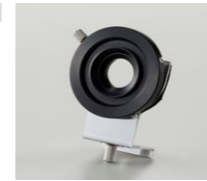
## Minimal polarization error

### Minimal polarization error

Polarization errors that occur when using a reflective diffraction grating are reduced to a manageable 2% (at a 1° measuring angle), thus enabling stable measurements of display devices that utilize polarized light such as LCDs.

## Camera mounting

A CCD camera can be mounted on the viewfinder via the CS-A36 adapter (Optional accessory).

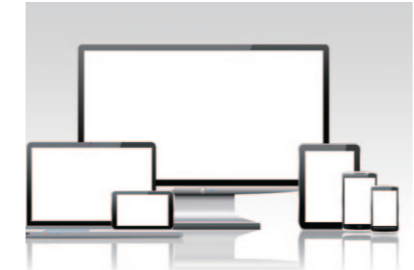


## User-selectable measuring angle (1°, 0.2°, 0.1°)

Measurements of various objects are possible by selecting the best-suited measuring angle.

### 1° is suitable for:

- Typical targets such as middle- and large-size display units
- LCD, PDP, or EL display panels
- LCD panels of cellular phones and digital cameras
- Radar and other instrument panels used in airplane cockpits
- Large outdoor display screens



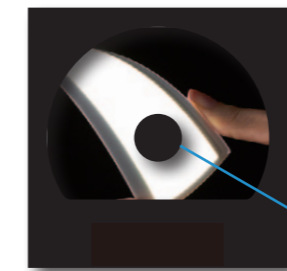
### 0.2° is suitable for:

- Small light sources such as LEDs
- Car audio systems
- Instrument panels for automobiles
- Lamps, fluorescent tube backlights, and other light sources

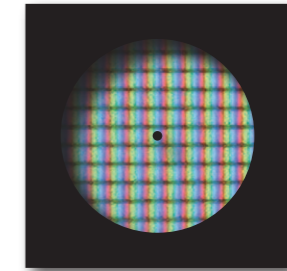


### 0.1° is suitable for:

- Extremely small light sources or distant lights
- PDP or LCD pixels
- Cold-cathode tubes
- Brake lamps of automobiles
- Traffic signals



Measuring area viewed through viewfinder



LCD pixels

**As a reference instrument**

**Using as a reference instrument**

CS-2000/CS-2000A can be used as a reference instrument for Konica Minolta's other light-measuring instruments in various industrial fields.



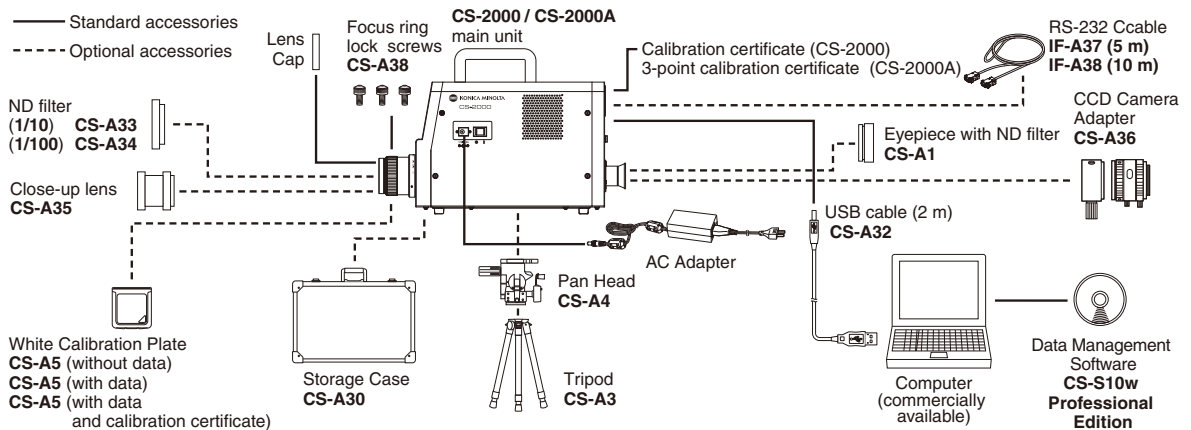
**Illuminance spectroradiometer CS-2000A-I (customized product)**

The CS-2000A-I is an accurate illuminance spectroradiometer ideal for evaluating projectors and LED or EL lighting. The illuminance adapter can also be removed to use the instrument as a spectroradiometer.

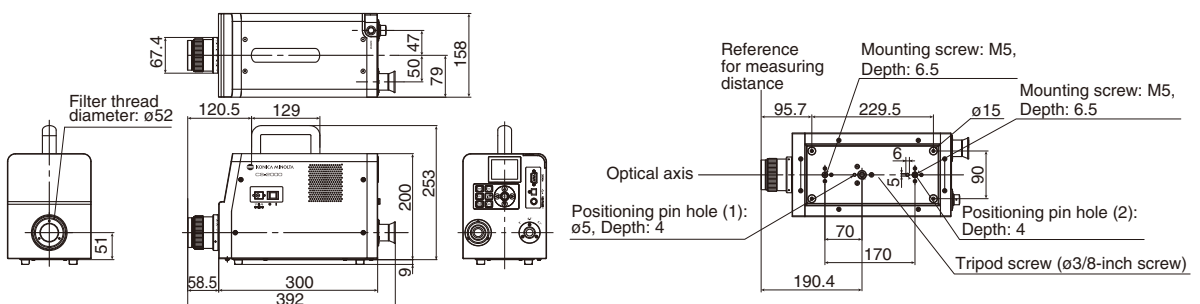


Spectral bandwidth:	5 nm or less (half bandwidth)
Measurement luminance range	
Measuring angle 1° :	0.01 lx to 75,000 lx
Measuring angle 0.1° :	1.00 lx to 7,500,000 lx

**System Diagram**



**Dimensions (Units: mm)**

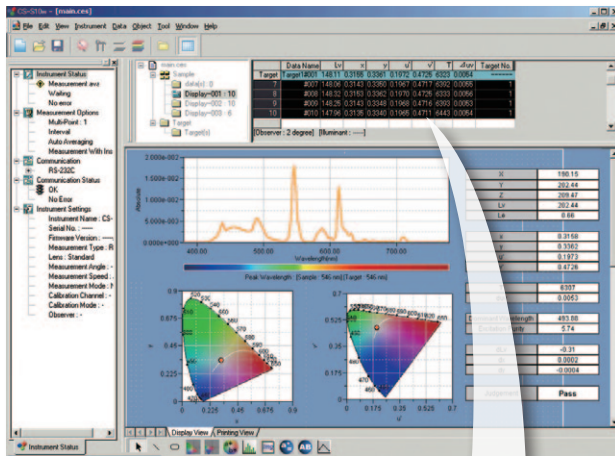


## User-friendly standard software

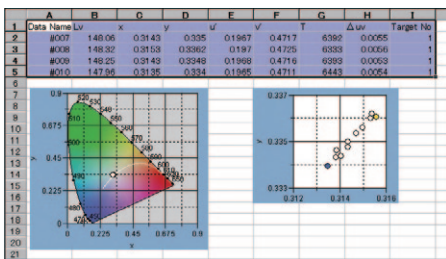
# Data Management Software CS-S10w Professional (standard accessory)

With this software, the CS-2000 and CS-2000A can be controlled from a personal computer to display measured data in various graphs or lists, to transfer data to spreadsheet software, or to copy and paste data. CS-S10w offers various data management, analysis and-evaluation options to assist in research and development or quality control.

Template showing xy and u'v' chromaticity diagrams



Multiple data objects can be copied and pasted to spreadsheet software.



\* The instrument must be connected to a PC over USB to use this software.

- Display** Spectral graph, spectral data list, chromaticity diagram
- Color space**  $L_v x y$ ,  $L_v u' v'$ ,  $L_v T uv$ , XYZ, dominant wavelength, excitation purity, scotopic luminosity
- Calculation** Four basic arithmetic operations and function processing of spectral data
- Mode selection** Normal mode, contrast mode, RGB mode, RGB & contrast mode, object color mode
- Instrument control** Averaging measurement, interval measurement, user calibration
- Data management** Reading/saving files; managing data by using folders; creating, saving and reading templates with various graphs designed and laid-out by users; displaying data on graphs
- Data evaluation** Observer/illuminant setting, color rendering property evaluation, statistic value display for each folder, box tolerance setting, multiple point setting for display evaluation, non-uniformity (mura) display, contrast display, polygonal tolerance setting
- System requirements**
- OS** Windows® 7 Professional 32-bit, 64-bit  
Windows® 8.1 Pro 32-bit, 64-bit  
Windows® 10 Pro 32-bit, 64-bit  
\* The hardware of the computer system to be used must meet or exceed the greater of the recommended system requirements for the compatible OS being used or the following specifications.
- CPU** Pentium® III 600 MHz equivalent or faster
- Memory** 128 MB or more (256 MB or more recommended)
- Hard disk** 60 MB or more of free space for installation
- Display** 1,024 x 768, 256 colors minimum
- Other** CD-ROM drive for installation, USB port for instrument connection

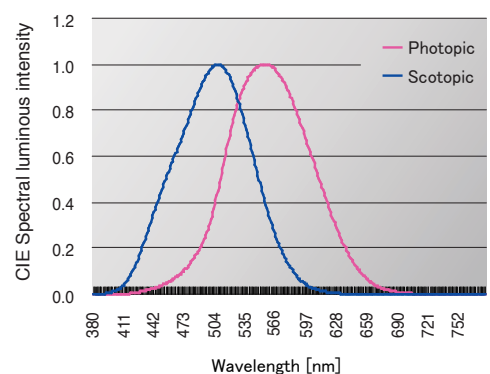
- Windows® is a trademark or registered trademark of Microsoft Corporation in the USA and other countries.
- Pentium® is a trademark of Intel Corporation in the USA and other countries.

## Scotopic vision measurement

It is known that the sensitivity of human vision shifts to blue region in dark environments, but past instruments did not have a scotopic measurement function. CS-2000A achieves sufficient capability to make it possible with CS-S10w Professional (standard accessory).

### Scotopic vision

In the human eye, there are 2 types of photoreceptor cells, which are cone cells and rod cells. Cone cells are sensitive to color and rod cells are sensitive to only brightness. As brightness decreases, the activity of rod cells becomes stronger, and the condition in which only rod cells are working is called scotopic vision. The peak of spectral luminous efficiency of scotopic vision is shifted toward blue from the green peak of photopic vision (vision under brighter conditions) and thus blue objects are perceived to be brighter.



# Specifications

		CS-2000/2000A		
Wavelength range		380 to 780 nm		
Wavelength resolution		0.9 nm/pixel		
Display wavelength bandwidth		1.0 nm		
Wavelength precision		±0.3 nm (Median wavelength: 435.8 nm, 546.1 nm, 643.8 nm; Hg-Cd lamp)		
Spectral bandwidth		5 nm or less (half bandwidth)		
Measuring angle (selectable)		1°	0.2°	0.1°
Measurement luminance range (Standard light source A)	CS-2000	0.003 to 5,000 cd/m <sup>2</sup>	0.075 to 125,000 cd/m <sup>2</sup>	0.3 to 500,000 cd/m <sup>2</sup>
	CS-2000A	0.0005 to 5,000 cd/m <sup>2</sup>	0.0125 to 125,000 cd/m <sup>2</sup>	0.05 to 500,000 cd/m <sup>2</sup>
Minimum measuring area		ø5 mm (ø1 mm when using close-up lens)	ø1 mm (ø0.2 mm when using close-up lens)	ø0.5 mm (ø0.1 mm when using close-up lens)
Minimum measuring distance		350 mm (55 mm when using close-up lens)		
Minimum spectral radiance display		1.0x10 <sup>-9</sup> W/sr · m <sup>2</sup> · nm		
Accuracy: Luminance (Standard light source A)*1		±2%		
CS-2000	Accuracy: Chromaticity (Standard light source A)*1	x,y : ±0.003 (0.003 to 0.005 cd/m <sup>2</sup> ) x,y : ±0.002 (0.005 to 0.05 cd/m <sup>2</sup> ) x : ±0.0015 y : ±0.001 (0.05 cd/m <sup>2</sup> or more)	x,y : ±0.003 (0.075 to 0.125 cd/m <sup>2</sup> ) x,y : ±0.002 (0.125 to 1.25 cd/m <sup>2</sup> ) x : ±0.0015 y : ±0.001 (1.25 cd/m <sup>2</sup> or more)	x,y : ±0.003 (0.3 to 0.5 cd/m <sup>2</sup> ) x,y : ±0.002 (0.5 to 5 cd/m <sup>2</sup> ) x : ±0.0015 y : ±0.001 (5 cd/m <sup>2</sup> or more)
	Repeatability: Luminance (2σ) (Standard light source A)*2	0.4% (0.003 to 0.05 cd/m <sup>2</sup> ) 0.3% (0.05 to 0.1 cd/m <sup>2</sup> ) 0.15% (0.1 to 5,000 cd/m <sup>2</sup> )	0.4% (0.075 to 1.25 cd/m <sup>2</sup> ) 0.3% (1.25 to 2.5 cd/m <sup>2</sup> ) 0.15% (2.5 to 125,000 cd/m <sup>2</sup> )	0.4% (0.3 to 5 cd/m <sup>2</sup> ) 0.3% (5 to 10 cd/m <sup>2</sup> ) 0.15% (10 to 500,000 cd/m <sup>2</sup> )
	Repeatability: Chromaticity (2σ) (Standard light source A)*2	x,y : 0.002 (0.003 to 0.005 cd/m <sup>2</sup> ) x,y : 0.001 (0.005 to 0.1 cd/m <sup>2</sup> ) x,y : 0.0006 (0.1 to 0.2 cd/m <sup>2</sup> ) x,y : 0.0004 (0.2 to 5,000 cd/m <sup>2</sup> )	x,y : 0.002 (0.075 to 0.125 cd/m <sup>2</sup> ) x,y : 0.001 (0.125 to 2.5 cd/m <sup>2</sup> ) x,y : 0.0006 (2.5 to 5 cd/m <sup>2</sup> ) x,y : 0.0004 (5 to 125,000 cd/m <sup>2</sup> )	x,y : 0.002 (0.3 to 0.5 cd/m <sup>2</sup> ) x,y : 0.001 (0.5 to 10 cd/m <sup>2</sup> ) x,y : 0.0006 (10 to 20 cd/m <sup>2</sup> ) x,y : 0.0004 (20 to 500,000 cd/m <sup>2</sup> )
CS-2000A	Accuracy: Chromaticity (Standard light source A)*1	x,y : ±0.002 (0.001 to 0.05 cd/m <sup>2</sup> ) x : ±0.0015 y : ±0.001 (0.05 cd/m <sup>2</sup> or more)	x,y : ±0.002 (0.025 to 1.25 cd/m <sup>2</sup> ) x : ±0.0015 y : ±0.001 (1.25 cd/m <sup>2</sup> or more)	x,y : ±0.002 (0.1 to 5 cd/m <sup>2</sup> ) x : ±0.0015 y : ±0.001 (5 cd/m <sup>2</sup> or more)
	Repeatability: Luminance (2σ) (Standard light source A)*2	1.5% (0.0005 to 0.001 cd/m <sup>2</sup> ) 0.7% (0.001 to 0.003 cd/m <sup>2</sup> ) 0.25% (0.003 to 0.05 cd/m <sup>2</sup> ) 0.15% (0.05 to 5,000 cd/m <sup>2</sup> )	1.5% (0.0125 to 0.025 cd/m <sup>2</sup> ) 0.7% (0.025 to 0.075 cd/m <sup>2</sup> ) 0.25% (0.075 to 1.25 cd/m <sup>2</sup> ) 0.15% (1.25 to 125,000 cd/m <sup>2</sup> )	1.5% (0.05 to 0.1 cd/m <sup>2</sup> ) 0.7% (0.1 to 0.3 cd/m <sup>2</sup> ) 0.25% (0.3 to 5 cd/m <sup>2</sup> ) 0.15% (5 to 500,000 cd/m <sup>2</sup> )
	Repeatability: Chromaticity (2σ) (Standard light source A)*2	x: 0.003 y: 0.0035 (0.001 to 0.003 cd/m <sup>2</sup> ) x: 0.001 y: 0.0015 (0.003 to 0.1 cd/m <sup>2</sup> ) x,y : 0.0006 (0.1 to 0.2 cd/m <sup>2</sup> ) x,y : 0.0004 (0.2 to 5,000 cd/m <sup>2</sup> )	x: 0.003 y: 0.0035 (0.025 to 0.075 cd/m <sup>2</sup> ) x: 0.001 y: 0.0015 (0.075 to 2.5 cd/m <sup>2</sup> ) x,y : 0.0006 (2.5 to 5 cd/m <sup>2</sup> ) x,y : 0.0004 (5 to 125,000 cd/m <sup>2</sup> )	x: 0.003 y: 0.0035 (0.1 to 0.3 cd/m <sup>2</sup> ) x: 0.001 y: 0.0015 (0.3 to 10 cd/m <sup>2</sup> ) x,y : 0.0006 (10 to 20 cd/m <sup>2</sup> ) x,y : 0.0004 (20 to 500,000 cd/m <sup>2</sup> )
Polarization error		1°: 2% or less (400 to 780 nm); 0.1° and 0.2°: 3% or less (400 to 780 nm)		
Integration time		Fast: 0.005 to 16 sec.; Normal: 0.005 to 120 sec.		
Measurement time		CS-2000 : Approx. 2 sec. minimum (Manual mode) to 243 sec. maximum (Normal mode)	CS-2000A : Approx. 2 sec. minimum (Manual mode) to 247 sec. maximum (Normal mode)	
Color space		L <sub>xy</sub> , L <sub>u'v'</sub> , L <sub>v</sub> TΔuv, XYZ, spectral graph, dominant wavelength, excitation purity, scotopic luminosity (with CS-S10w Professional)		
Interface		USB 1.1, RS-232C		
Operation temperature/humidity range		CS-2000 : 5 to 35°C, relative humidity 80% or less with no condensation	CS-2000A : 5 to 30°C, relative humidity 80% or less with no condensation	
Storage temperature/humidity range		0 to 35°C, relative humidity 80% or less with no condensation		
Power		Dedicated AC Adapter (100 - 240 V~, 50/60 Hz)		
Current consumption		Approx. 20 W		
Size (W x H x D)		158 x 262 x 392 mm		
Weight		Approx. 7.0 kg		

\*1: Average of 10 measurements in Normal mode at a temperature of 23±2°C and a relative humidity of 65% or less.

\*2: 10 measurements in Normal mode at a temperature of 23±2°C and a relative humidity of 65% or less.



### SAFETY PRECAUTIONS

For correct use and for your safety, be sure to read the instruction manual before using the instrument.

- Always connect the instrument to the specified power supply voltage. Improper connection may cause a fire or electric shock.

• The specifications and appearance shown herein are subject to change without notice.  
 • Some lighting control methods may make accurate measurements difficult. For details, please contact your nearest Konica Minolta sales office or dealer.

ISO Certifications of KONICA MINOLTA, Inc., Sakai Site



ISO 9001

JQA-QMA15888  
Design, development, manufacture/  
manufacturing management, calibration, and  
service of measuring instruments



ISO 14001

JQA-E-80027  
Design, development,  
manufacture, service and sales  
of measuring instruments

**KONICA MINOLTA, INC.**  
 Konica Minolta Sensing Americas, Inc.  
 Konica Minolta Sensing Europe B.V.

Osaka, Japan  
 New Jersey, U.S.A.  
 European Headquarter /BENELUX  
 German Office  
 French Office  
 UK Office  
 Italian Office  
 Swiss Office  
 Nordic Office  
 Polish Office  
 Turkish Office  
 SE Sales Division  
 Beijing Office  
 Guangzhou Office  
 Chongqing Office  
 Qingdao Office  
 Wuhan Office

**Phone** : 888-473-2656 (in USA), 201-236-4300 (outside USA)  
 Nieuwegein, Netherlands **Phone** : +31 (0)30 248-1193  
 München, Germany **Phone** : +49 (0)89 4357 156 0  
 Roissy CDG, France **Phone** : +33 (0)1 80 11 10 70  
 Warrington, United Kingdom **Phone** : +44 (0)1925 467300  
 Cinisello Balsamo, Italy **Phone** : +39 02849488.00  
 Dietikon, Switzerland **Phone** : +41 (0)43 322-9800  
 Västra Frölunda, Sweden **Phone** : +46 (0)31 7099464  
 Wrocław, Poland **Phone** : +48 (0)71 73452-11  
 Istanbul, Turkey **Phone** : +90 (0) 216-528 56 56  
 Shanghai, China **Phone** : +86-(0)21-5489 0202  
 Beijing, China **Phone** : +86-(0)10-8522 1551  
 Guangdong, China **Phone** : +86-(0)20-3826 4220  
 Chongqing, China **Phone** : +86-(0)23-6773 4988  
 Shandong, China **Phone** : +86-(0)532-8079 1871  
 Hubei, China **Phone** : +86-(0)27-8544 9942  
 Singapore **Phone** : +65 6563-5533  
 Goyang-si, Korea **Phone** : +82 (0)2-523-9726

**Fax** : 201-785-2482  
**Fax** : +31 (0)30 24 81 211  
**Fax** : +49 (0)89 4357 156 99  
**Fax** : +33 (0)1 80 11 10 82  
**Fax** : +44 (0)1925 711143  
**Fax** : +39 02849488.30  
**Fax** : +41 (0)43 322-9809  
**Fax** : +48 (0)71 734 52 10  
**Fax** : +90 (0) 212-253 49 69  
**Fax** : +86-(0)21-5489 0005  
**Fax** : +86-(0)10-8522 1241  
**Fax** : +86-(0)20-3826 4223  
**Fax** : +86-(0)23-6773 4799  
**Fax** : +86-(0)532-8079 1873  
**Fax** : +86-(0)27-8544 9991  
**Fax** : +65 6560-9721  
**Fax** : +82(0)31-995-6511

**Konica Minolta (CHINA) Investment Ltd.**

**Konica Minolta Sensing Singapore Pte Ltd.**  
 Konica Minolta Sensing Korea Co., Ltd.

Addresses and telephone/fax numbers are subject to change without notice. For the latest contact information, please refer to the KONICA MINOLTA Worldwide Offices web page :

<https://konicaminolta.com/instruments/network>