



## Safety Precautions

Before you use the CA-S25w software, we recommend that you thoroughly read this manual as well as the instruction manuals of your PC and the instrument.

Formal designations of application software used in this manual (Designation in this manual)	(Formal designation)
Windows, Windows XP	Microsoft® Windows® XP Professional Operating System
Windows, Windows 7	Microsoft® Windows® 7 Professional Operating System
Windows, Windows 8	Microsoft® Windows® 8 Pro Operating System
Excel	Microsoft® Excel®

## Trademarks

- “Microsoft”, “Windows”, “Windows XP”, “Windows 7”, “Windows 8” and “Excel” are registered trademarks of Microsoft Corporation in the U.S.A. and other countries.
  - “Intel” and “Pentium” are registered trademarks of Intel Corporation in the U.S.A. and other countries.
- Other company names and product names mentioned in this manual are the registered trademarks or trademarks of their respective companies.

## Notes on this manual

- No part of this manual may be reprinted or reproduced in any form or by any means without the permission of Konica Minolta Optics, Inc.
- The contents of this manual are subject to change without notice.
- Every effort has been made to ensure the accuracy of the contents of this manual. However, should you have any questions or comments, or find an error or missing section, please contact a Konica Minolta-authorized service facility.
- Konica Minolta accepts no responsibility for consequences resulting from failure to follow the instructions outlined in this manual, the condition above notwithstanding.

## Introduction

CA-S25w is data management software that allows connection of the 2D Color Analyzer CA-2500 (or CA-2000) to a PC and graphic representation of the measured data on the PC.

This installation guide assumes that the reader has a basic familiarity with the Windows operating system.

## Notes on Instruction Manual

Installing this software also installs the instruction manual in PDF format on the PC and creates a manual icon on the Windows start menu or screen.

To read the manual, go to Start Menu → All programs → KONICA MINOLTA CA-S25w → Manual PDF file.

The Instruction Manual of 2D Color Analyzer CA-2500 Series is also included on the installation CDROM.

You will need Adobe Reader® from Adobe Corporation. The latest Adobe Reader® can be downloaded for free from the Adobe website.

Also, it is possible to use the Adobe Reader® installer included on the installation CD-ROM.

(Example) When the CD-ROM is in D drive D:\Adobe Reader\ENG

## Software License Agreement

The terms of the license agreement of the CA-S25w software are provided in the Software License.

Agreement dialog box displayed on-screen during the installation process. This software can be installed only if you agree to all the terms of the agreement.

## Notes on Use

- The CA-S25w application software is designed to be used with the Windows XP, Windows 7 or Windows 8 operating system. Note that neither operating system is included with this software.
- Before you install this software, one of the above OS must be installed in the PC.
- When inserting the CD-ROM/DVD-ROM into the CD-ROM/DVD-ROM drive, note the correct orientation of the disc. Insert it gently.
- Keep the CD-ROM/DVD-ROM clean and free from scratches. If the recorded surface becomes dirty or the label surface is scratched, a read error may result.
- Avoid exposing the CD-ROM/DVD-ROM to rapid temperature changes and condensation.
- Avoid leaving it in locations where it may be exposed to high temperatures from direct sunlight or heaters.
- Do not drop the CD-ROM/DVD-ROM or subject it to strong impact.
- Keep the CD-ROM/DVD-ROM away from water, alcohol, paint thinners, and other such substances.
- Remove the CD-ROM/DVD-ROM from the CD-ROM/DVD-ROM drive while the computer is turned on.

## Notes on Storage

- After using the CD-ROM/DVD-ROM, return it to its case and store in a safe place.
- Avoid leaving the CD-ROM/DVD-ROM in locations where it may be exposed to high temperatures from direct sunlight or heaters.
- The CD-ROM/DVD-ROM should not be kept in areas of high humidity.

Every effort has been made to ensure the accurate operation of this software. However, should you have any questions or comments, please contact the nearest Konica Minolta authorized service facility.

## 1. System Requirements

### Operating condition

**OS** Windows XP Professional SP3  
Windows XP Professional x64 Edition SP2  
Windows 7 Professional 32 bit (x86)  
Windows 7 Professional 64 bit (x64)  
Windows 8 Pro 32 bit (x86)  
Windows 8 Pro 64 bit (x64)  
(English, Japanese, or Chinese (simplified font) version of the above OS)  
The PC must meet the system requirements specified by the applicable OS or listed below, whichever is higher.

**CPU** Equivalent to Pentium 4, 2.8 GHz or better

**Memory** 1024 MB or more

**Hard disk drive** At least 80 MB of available disk space is required on the system drive (drive where the OS is installed).  
To install the calibration data, the following disk space is required for each lens:

- For a standard lens: approximately 540 MB
- For a wide angle lens: approximately 470 MB
- For a telephoto lens: approximately 1.3 GB

To save measurement data on the hard disk, you need to reserve the following additional space on the hard disk:

- For example, approximately 110 MB is required to save 10 pieces of measurement data.
- About 1 MB is required for configuration files such as the spot setting file and measurement condition file.

**Display** Display hardware capable of displaying 1280 × 768 pixels / 65,536 colors (High Color: 16-bit color) or better

**Other** CD-ROM drive Required for installation 1 DVD-ROM drive Required for installation of calibration data  
\* In place of the above two drives, you can use a single drive that is capable of reading both CD-R and DVD-R media.

A USB port is required for connection of the instrument.

### Compatible Instruments

**Instrument** CA-2000, CA-2500

### Language

**Display language** English, Japanese, Chinese (simplified font)  
(Select one during installation)

## 2. Software Installation

Install the software before connecting the CA-2500 (or CA-2000) to the PC.

The software is provided on a CD-ROM and the calibration data on a DVD-ROM. A CD-ROM/DVDROM drive is required to use them. If an older version of this software has been installed, you need to uninstall it before installing this version.

**Note** If there are any measurement data or setting files stored in the installation folder, be sure to move them to a different folder before uninstalling the older version.

To install the software, be sure to log on to the PC as an administrator.

**Tip** If you selected a user other than a user with administrator privileges, you cannot install the software.

### Installation Method

If your operating system is Windows 7 or 8, you will see a User Account Control dialog box during installation of the software. At that time, select "Yes" or "Continue".

#### 1 Insert the software CD into the CD-ROM/DVD-ROM drive.

- For Windows 8, click on "Tap to choose what happens with removable drives" at the upper right of the screen and click on the "setup.exe" icon.
- When the Select Language dialog box appears, select the language to install and click the **OK** button.  
The procedure below assumes that English is the selected language.
- The InstallShield Wizard appears.

#### 2 Click the **Next** button.

#### 3 Read the software license agreement, select 'I accept the terms in the license agreement', and click the **Next** button.

#### 4 Check the destination folder. Click the **Next** button.

- To install to a different folder, click the **Change** button and specify the folder.

#### 5 Click the **Install** button.

- Installation starts.

#### 6 Click the **Finish** button.

- Installation is complete.

### Uninstallation Method

#### 1 In Windows, select Start - Control Panel - Uninstall a Program.

- For Windows 8, move the cursor to the lower left corner of the start screen and right-click. Then click "Programs and Features" in the right-click menu.

#### 2 Select 'CA-S25w' from the list and click the **Uninstall** button.

#### 3 In the Programs and Features dialog box, click the **Yes** button.

- The uninstallation program is executed.

#### 4 Follow the prompts to complete the uninstallation process.

### 3. Connecting the CA-2500 to PC

Install the software before connecting the CA-2500 (or CA-2000) to the PC.

#### Connecting the CA-2500 for the first time (Windows XP)

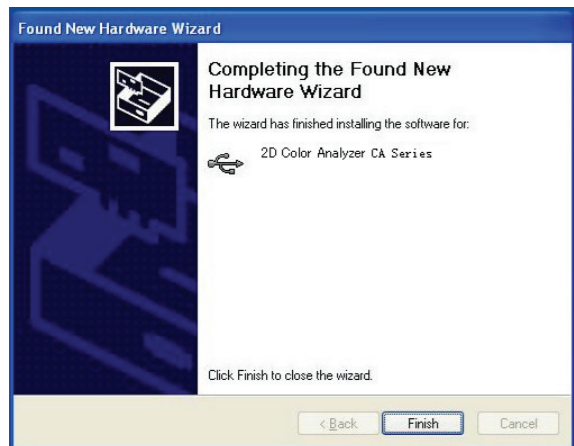
- 1 After turning on the CA-2500's power, connect the USB cable to the PC and the CA-2500.
  - The Found New Hardware Wizard dialog box appears. Wait a while.
- 2 Select 'No, not this time' and click the Next button.



- 3 Select 'Install from a list or specific location' and click the Next button.

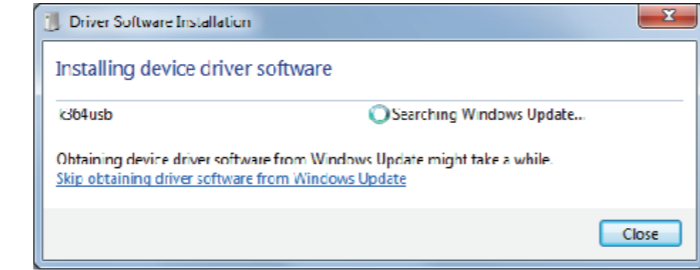
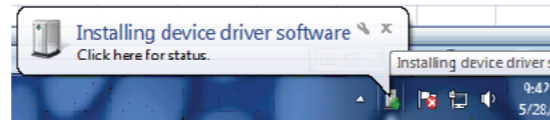


- 4 Select the "Driver" folder in the software CD and click the Next button.
- 5 When the confirmation window appears, Click the Continue Anyway button.
- 6 Click the Finish button.
  - Installation is complete.

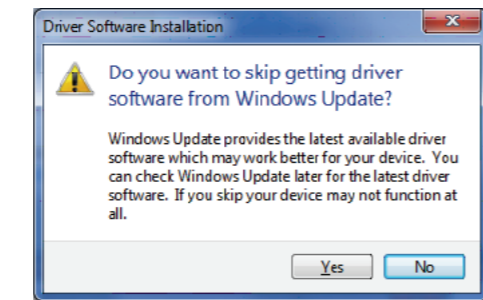


#### Connecting the CA-2500 for the first time (Windows 7)

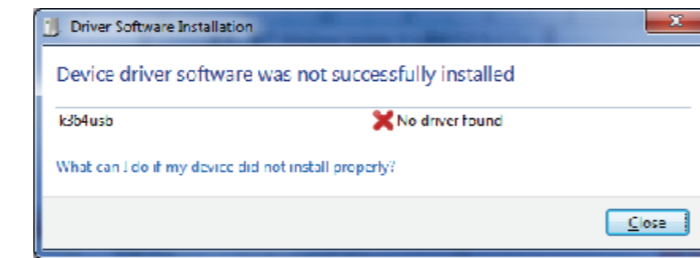
- 1 Insert the software CD into the drive. After turning on the CA-2500's power, connect the USB cable to the PC and the CA-2500.
  - The installation of the device driver should start automatically.
- 2 Select the icon showing Installing device driver software from the taskbar.
- 3 When the Device Software Installation dialog box appears, click 'Skip obtaining driver software from Windows Update'.



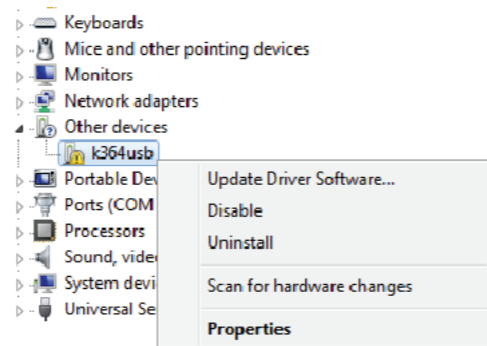
- 4 When the confirmation window appears, click the Yes button.



- 5 Wait for the screen below to appear and click the Close button.
  - Please wait for a while as this may take several minutes.

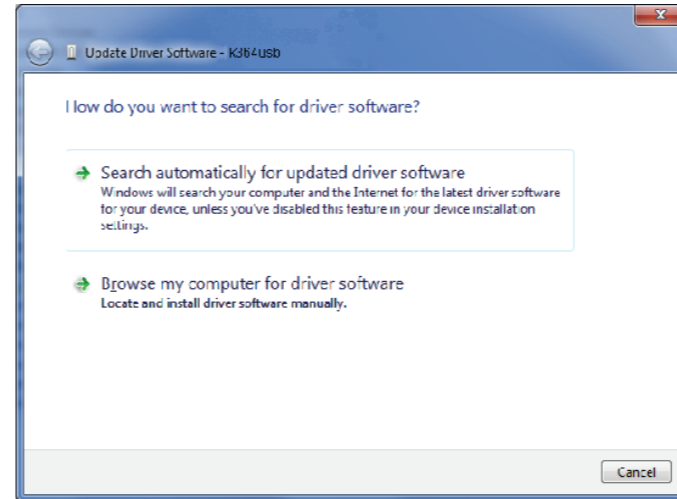


- 6 Right click on the 'Computer' from the Start menu and select 'Properties'.
  - The screen below will appear after clicking 'Device Manager' on the left of the Control Panel.

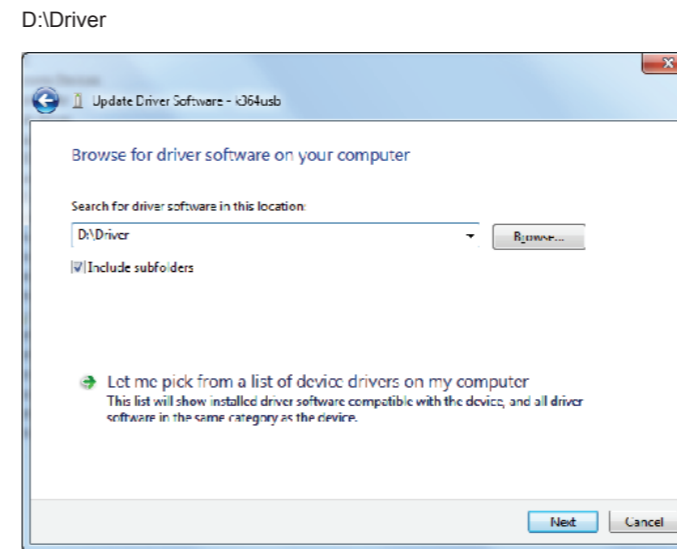


- 7 Right click on 'k364usb' and select 'Update Driver Software'.

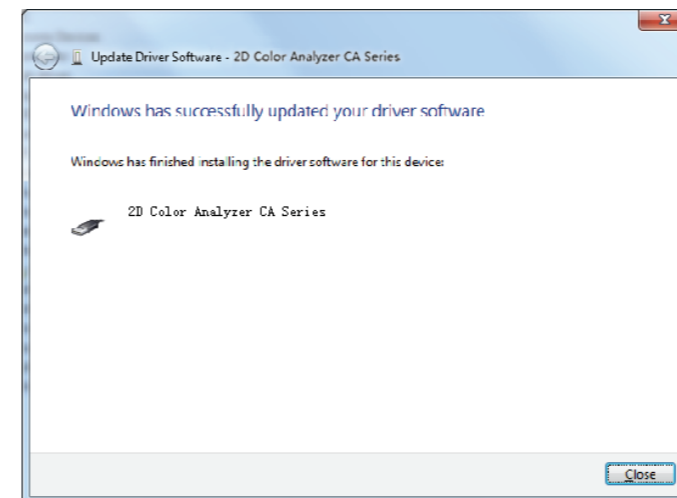
- 8 Click 'Browse my computer for driver software'.



- 9 Designate the driver folder in the software CD and click the Next button.
  - (Example) In the case of CD-ROM in D drive.

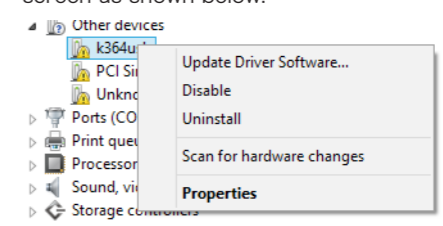


- 10 Click the Close button.
  - The installation of the driver software is complete.

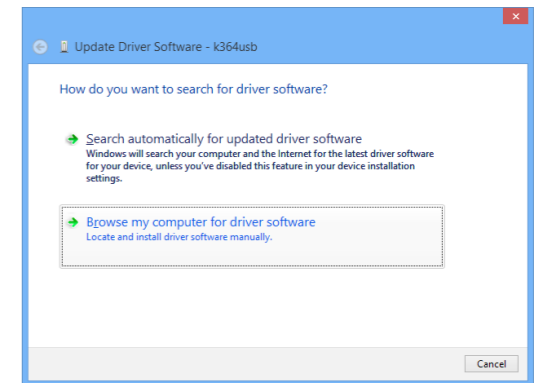


#### Connecting the CA-2500 for the first time (Windows 8)

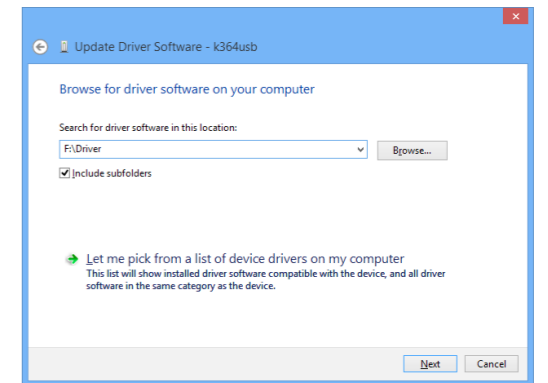
- 1 Insert the software CD into the drive. After turning on the CA-2500's power, connect the USB cable to the PC and the CA-2500.
- 2 Move the cursor to the lower left corner of the screen. When a window opens, right-click.
  - Clicking on "Device Managers" from the menu will open the screen as shown below.
- 3 Right click on 'k364usb' and select 'Update Driver Software'.
- 4 Click 'Browse my computer for driver software'.



- 5 Designate the driver folder in the software CD and click the Next button.
  - (Example) In the case of CD-ROM in D drive.



- 6 Click the Close button.
  - The installation of the driver software is complete.



- 6 Click the Close button.
  - The installation of the driver software is complete.

