



KONICA MINOLTA

REGIUS CASSETTE PLATE

CP1M200

for mammography



Konica Minolta is actively supporting the Pink Ribbon Campaign in the effort to promote early detection and treatment of breast cancer.



KONICA MINOLTA

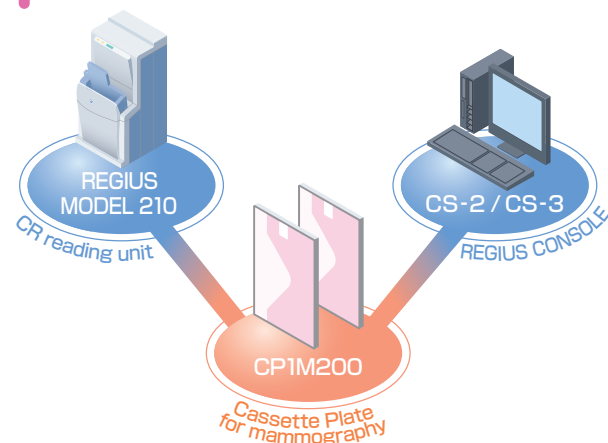
KONICA MINOLTA MEDICAL & GRAPHIC, INC.

No.1, Sakura-machi, Hino-shi, Tokyo, 191-8511, Japan

Distributed by :

The essentials of imaging

Sample System Configuration



*CP1M200 is available on REGIUS MODEL190, 210, 110HQ.



The CP1M200 is a newly designed detector delivering the highest image quality for mammography.

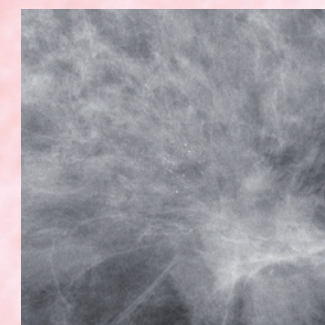
<Features>

- Exceptional sharpness and granularity
- Clear recognition of anatomical edges such as tumor mass boundaries
- Clear visibility of micro calcifications
- Durable detector technology provides long lifetime of use

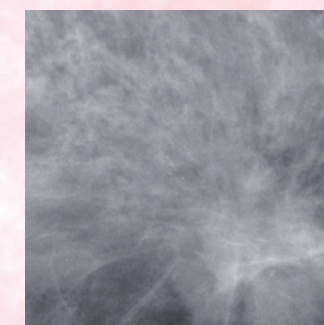
Improvement of sharpness and granularity

Applying the needle crystallized structure technology improves sharpness and granularity dramatically.

CP1M produces high level of image quality



CP1M200



Current Plate

Tumor mass is described clearly as well as the edge of the micro calcifications.

The best diagnostic capability for all mammography examinations

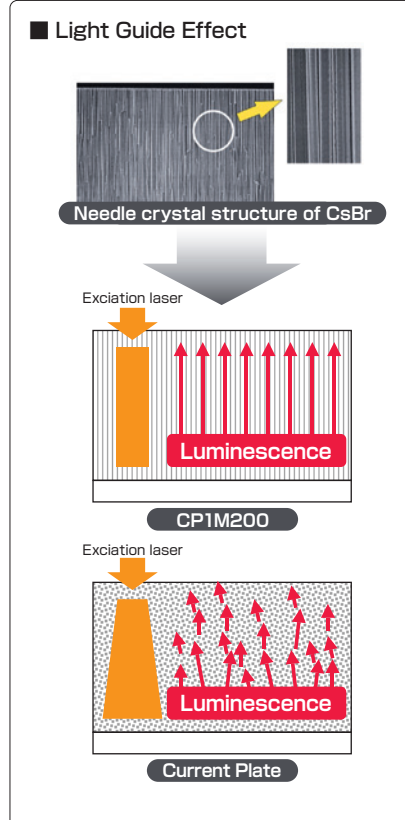
—The best image quality rendering superior sharpness with minimal image granularity—



Regius Cassette Plate CP1M200
Size : 24×30cm, 18×24cm

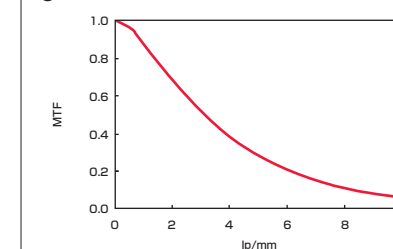
Crystallization technology (CsBr+Needle Crystallization Technology)

- Improved image sharpness due to specialized phosphor structure producing a "light guide effect".
- New detector technology offers excellent X-ray absorption across full range of mammography energies.
- High efficiency phosphor improves image quality while minimizing exposure dose to patient.

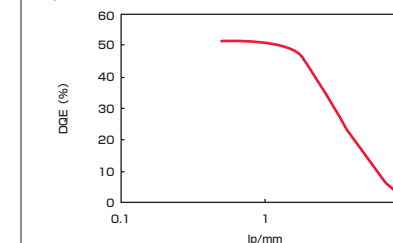


MTF and DQE

● MTF



● DQE



REGIUS MODEL190, 210 with CP1M200 exceeds 50% DQE.

MAMMOGRAPHY