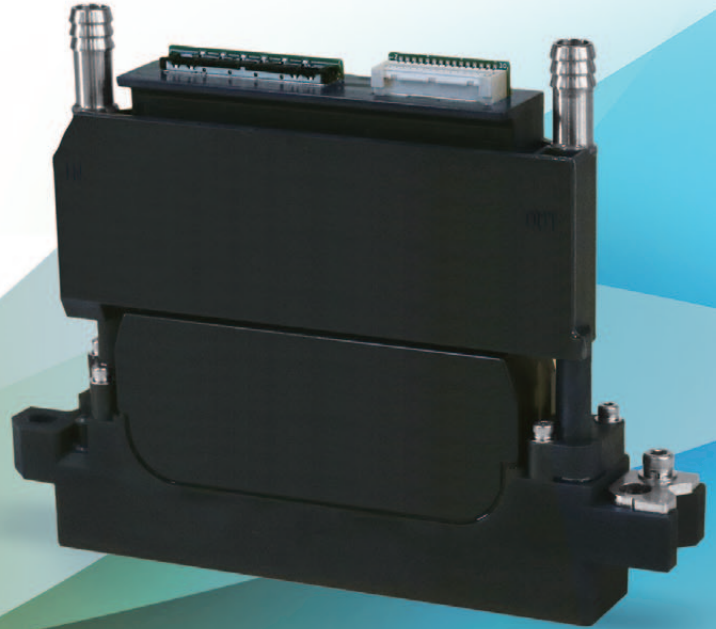




KONICA MINOLTA

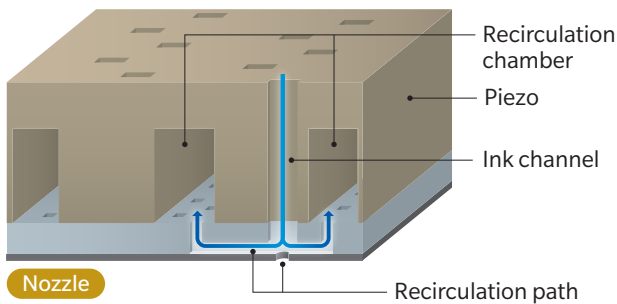
KM1024aLHG-RC

High Productivity, Large Droplet Print Head Featuring Unique Nozzle Recirculation System



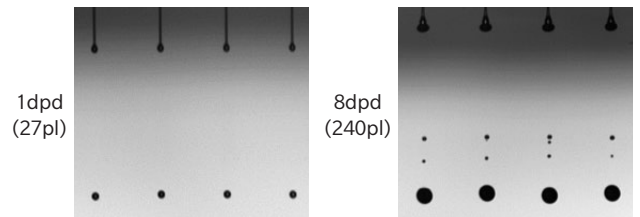
Unique Nozzle Recirculation

Dual recirculation paths optimize the flow regime at the nozzle level. This delivers stable jetting even with sediment-prone inks.



High Productivity Analog Waveform

Originally-developed analog waveform is optimal for multi-drop jetting. A wide range of ink droplet sizes up to 240pl can be jetted from one head.



Compact Print Head

Compact (19.5mm wide) print head enables compact high quality printer design featuring nozzle recirculation.



Durability with Variety of Inks

Suitable not only for UV, solvent, and oil-based inks but for eco-friendly water-based inks*.



* Compatibility should be checked by customer before use.

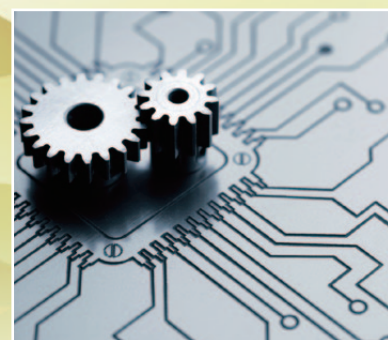
Covering wide range of applications



Textile



Decor



Printed Electronics

Specifications

Model Name	KM1024aLHG-RC		
Drive mode	Independent		
# of Nozzle	1024		
Print width (mm)	72		
Resolution (npi)	360		
Head dimensions	W: 131.2mm × D: 19.5mm × H: 99.2mm		
Regular jetting frequency (kHz)	25.6kHz (Binary)	12.8kHz (3dpd)	5.7kHz (8dpd)
Drop volume (pL)	27pl (Binary)	79pl (3dpd)	240pl (8dpd)
Jetting temperature	RT - 55°C		
Internal heater	Available		
Ink type	Solvent, UV, Oil, Water based		
Ink viscosity (mPa·s)	10-14		
Waveform	Analogue		
Weight	190g		
Grey scale level	8 Level		

2D Design

