



KONICA MINOLTA

KM800/1600 KM800-D

Thin film piezo drive technology enables high productivity, high resolution, and high-speed. Compatible with a wide range of inks from water-based to eco-solvent.



High Quality Image with Wide Media Gap

Thin film piezo and unique nozzle processing technology enables satellite-less, high-quality printing even with wide media gaps. Prints on uneven substrates and 3-dimensional objects, as well as jetting horizontally.

High Jetting Stability and Durability

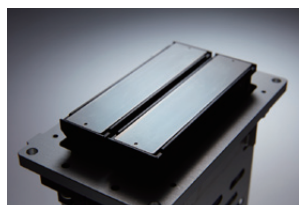
The stainless steel ink flow path and nozzle plate, together with high jetting stability and nozzle durability ensures the print head meets the high reliability requirement for most industrial applications.

New Drive Waveform Supports Wide Range of Inks

Konica Minolta have developed a new drive waveform. By improving robustness, it supports a wide range of inks and improves usability.

Up to 1600 Nozzles/720npi

KM1600 module (a combination of two KM800 Print heads), supports everything from graphic to commercial printing with the high resolution of 720npi. The small body enables compact printer design.



Multicolor Printing with Single Print head

One print head supports printing up to 4 colors*, enabling full color printing (Cyan, Magenta, Yellow, Black).

*For KM1600 (180 dpi per color)

Giving Shape to Ideas

Covering wide range of applications



Textile



Product Decoration



Commercial



Packaging

Specifications

Model Name	KM800	KM1600	KM800-D
Number of Nozzles	800	1600	800
Print Width (mm)	56.4		
Resolution (npi)	360	720	360
Head Dimensions	W: 99mm × D: 18.8mm × H: 109.4mm	W: 101.5mm × D: 59.8mm × H: 112.4 mm	W: 99mm × D: 18.8mm × H: 109.4mm
Drive Frequency (kHz)	Multi-drop: 18.2		
Droplet Volume (pL)	5 - 22		
Jetting Temperature	RT		
Internal Heater	None		
Damper	None		Available
Ink Types	Solvent, Water-based, Latex		
Ink Viscosity (mPa·s)	5 - 7		
Weight (g)	100	350	120
Grey Scale Level	4		

2D Design

<p>KM800</p>	<p>KM1600</p>	<p>KM800-D</p>
---------------------	----------------------	-----------------------

