



KONICA MINOLTA

MAMMOGRAPHY FILM

CM-H2



M · A · M · M · O · G · R · A · P · H · Y



Giving Shape to Ideas

MAMMOGRAPHY FILM CM-H2

*Produces images of high-quality and sharp detail over a wide density range.
Will not miss even minute details for diagnosis.*

KonicaMinolta Type CM-H2 is a very high contrast, high speed, single emulsion orthochromatic film designed specifically for mammography. CM-H2 film is optimized with the use of KonicaMinolta mammography screens or similar screens specially developed for mammographic imaging. Type CM-H2 has been formulated to produce excellent diagnostic results at the standard 90-second processing cycle as well as with extended processing cycle times.

Processing

To provide for maximum developer activity, Type CM-H2 should be processed emulsion side down. KonicaMinolta's mammography film can be processed in any 90 second cycle at 35°C or it can benefit from extended development time.

Safelight Recommendations

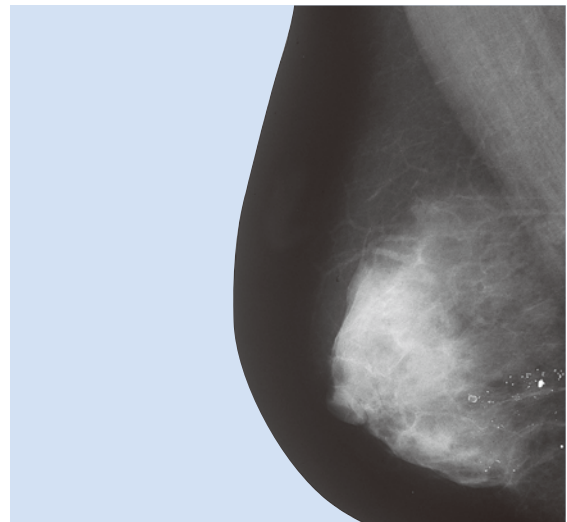
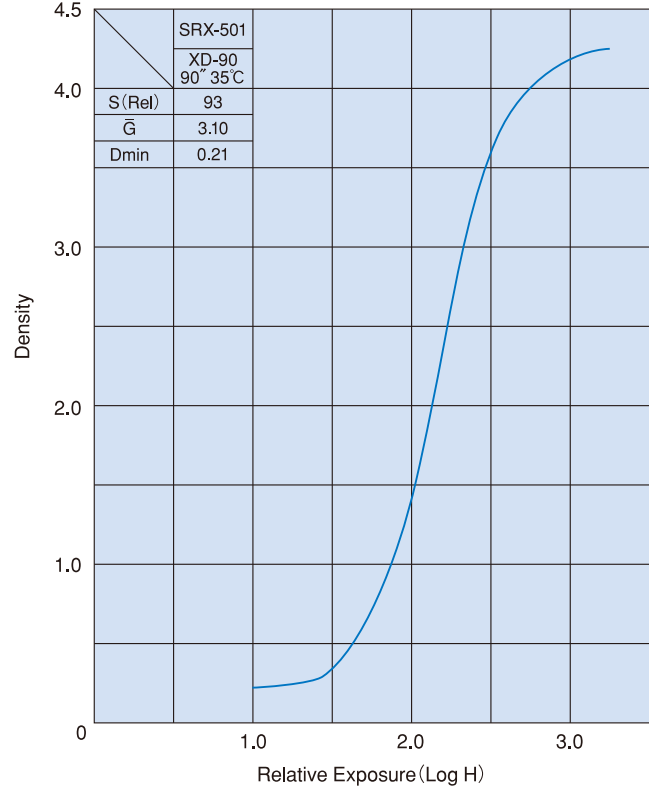
Type CM-H2 film may be used with a red or dark red safelight filter. Safelights should not exceed a 15 watt bulb at a working distance of at least 1.2 m.

Handling/Storage

Type CM-H2, like all radiographic films, should be handled carefully to avoid artifacts. Also, like all KonicaMinolta film, Type CM-H2 should be stored in a cool (10°-25°C) and dry (40-60% relative humidity) area. Boxes should be located off the floor in a vertical position. The storage area should never be subjected to chemical fumes, dust, radiation or radioactive materials. It is suggested to routinely rotate film inventory to avoid film from becoming outdated.

*Specifications are subject to change without notice.

Characteristic curve of CM-H2



Mammography Cassette&Screen



Konica Minolta medical film is manufactured with a quality management system that has been certified to be in compliance with the ISO 9001:2000 and ISO 13485:2003 quality management standards, as well as with the medical device directive (MDD) 93/42/EEC.



KONICA MINOLTA, INC.

1 Sakura-machi, Hino-shi, Tokyo, 191-8511, Japan

Distributed by :