



KONICA MINOLTA

REGIUS CASSETTE PLATE

CP1M200

for mammography



Konica Minolta is actively supporting the Pink Ribbon Campaign in the effort to promote early detection and treatment of breast cancer.



KONICA MINOLTA

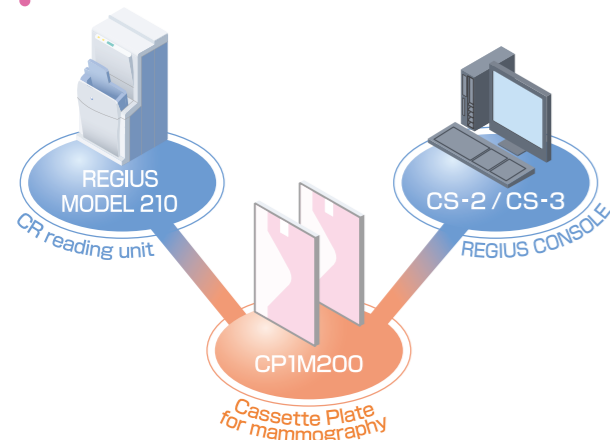
**KONICA MINOLTA, INC.**

1 Sakura-machi, Hino-shi, Tokyo, 191-8511, Japan

Distributed by :

Blank box for distributor information

### Sample System Configuration



\*CP1M200 is available on REGIUS MODEL190, 210, 110HQ.



The CP1M200 is a newly designed detector delivering the highest image quality for mammography.

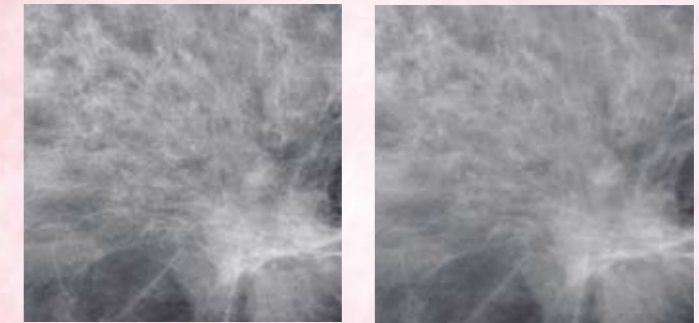
#### <Features>

- Exceptional sharpness and granularity
- Clear recognition of anatomical edges such as tumor mass boundaries
- Clear visibility of micro calcifications
- Durable detector technology provides long lifetime of use

#### Improvement of sharpness and granularity

Applying the needle crystallized structure technology improves sharpness and granularity dramatically.

#### CP1M produces high level of image quality



CP1M200

Current Plate

Tumor mass is described clearly as well as the edge of the micro calcifications.

# The best diagnostic capability for all mammography examinations

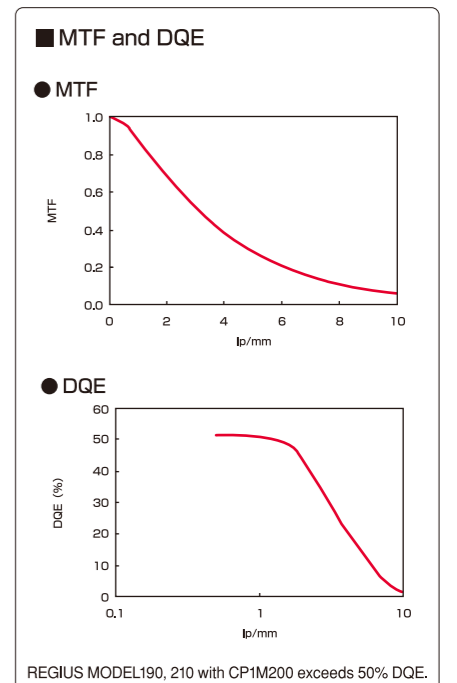
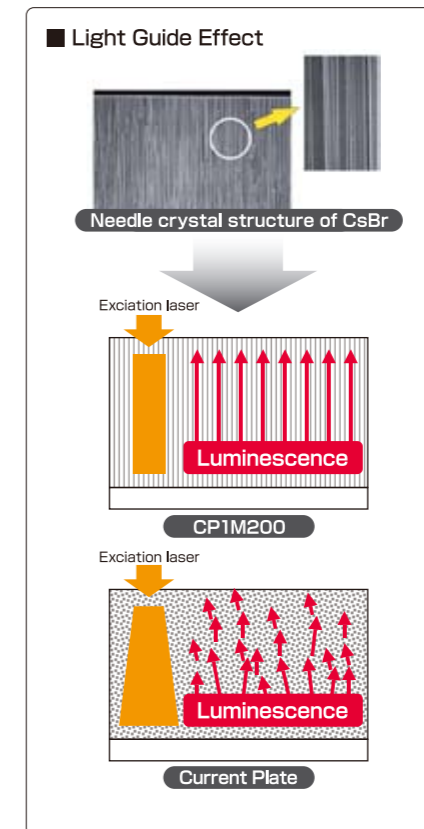
—The best image quality rendering superior sharpness with minimal image granularity—



Regius Cassette Plate CP1M200  
Size: 24×30cm, 18×24cm

#### Crystallization technology (CsBr+Needle Crystallization Technology)

- Improved image sharpness due to specialized phosphor structure producing a "light guide effect".
- New detector technology offers excellent X-ray absorption across full range of mammography energies.
- High efficiency phosphor improves image quality while minimizing exposure dose to patient.



M A M M O G R A P H Y