



Konica Minolta IJ Head for Industrial Applications

**Konica Minolta Technology Center Inc.,
Business Development Center
Akiyoshi OHNO**

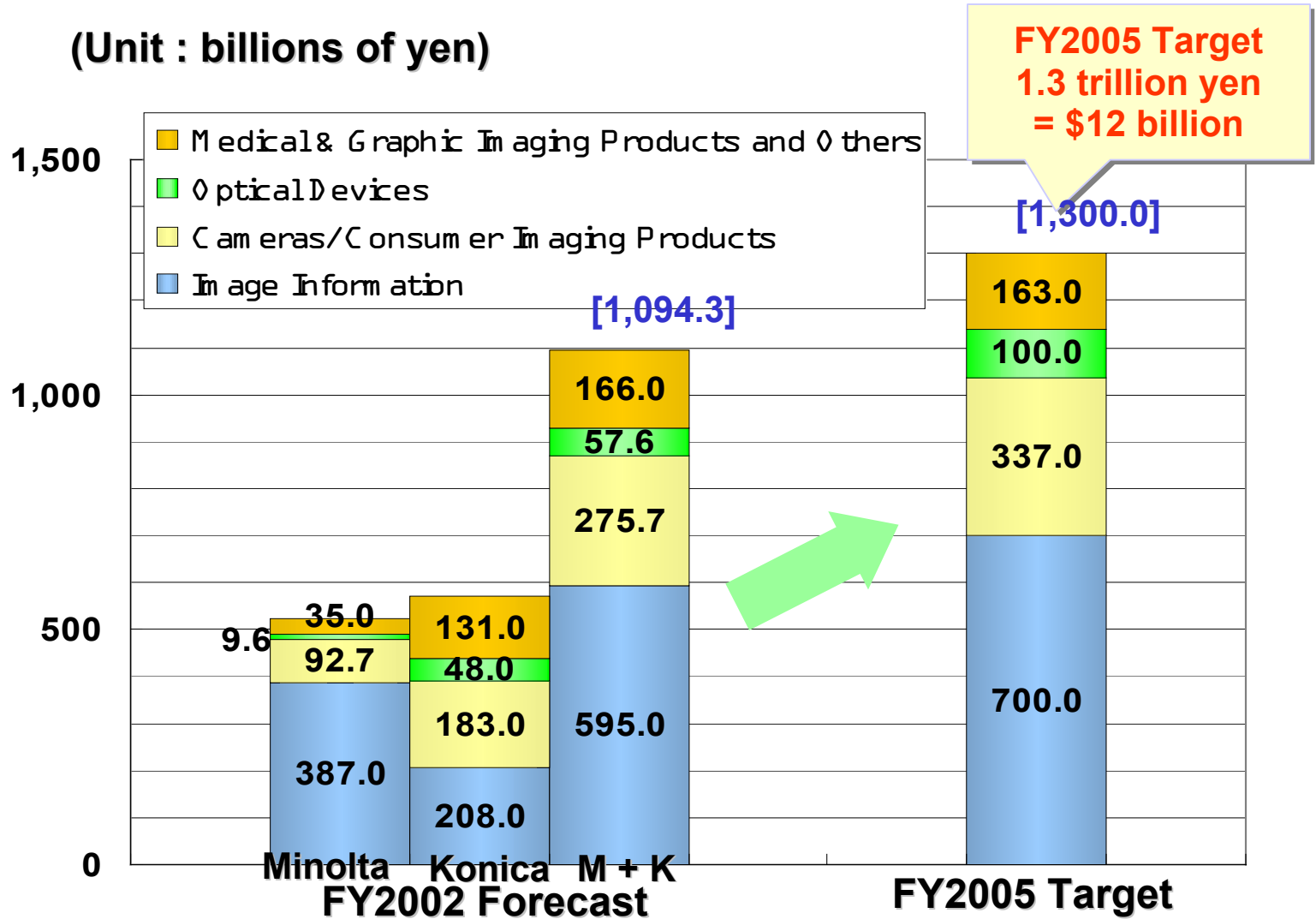
**Konica Minolta Technology USA Inc.,
Erik WALBERG
April 20 ,2004**

Contents

- Introduction : Konica Minolta ... Who ?
- Head Family
- Non-Aqueous Model : Common Feature
- Non-Aqueous Model
 - Large Drop : Single-pass capable
 - Small Drop : Fine Image Quality
 - GRAY SCALE
- Gray Scale Technology
- What's New ?
- Summary

1. Konica + Minolta ... Who?

(Unit : billions of yen)



2. Head Family

Non-Aqueous Model

Type	nozzle	dpi	ink	pl	KHz	built in Heater		Application
						with	without	
L	512	360	Oil Solvent UV Special	42	7.6	X	X	Single-pass
S				14	13	(X)	X	Fine print image

X available (X) coming soon

Aqueous Model

Type	nozzle	dpi	ink	pl	KHz			Application
	64		Aqueous (special)	60				Textile
	128			7				Special
	256			18				Textile
	512			4				Photo

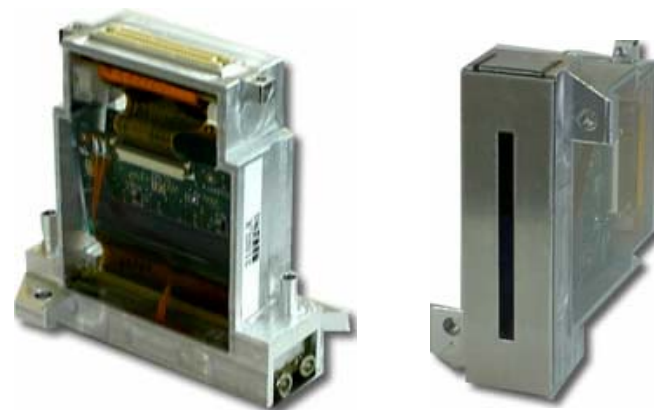
3. Non AQ : Common Feature

Non-Aqueous Model

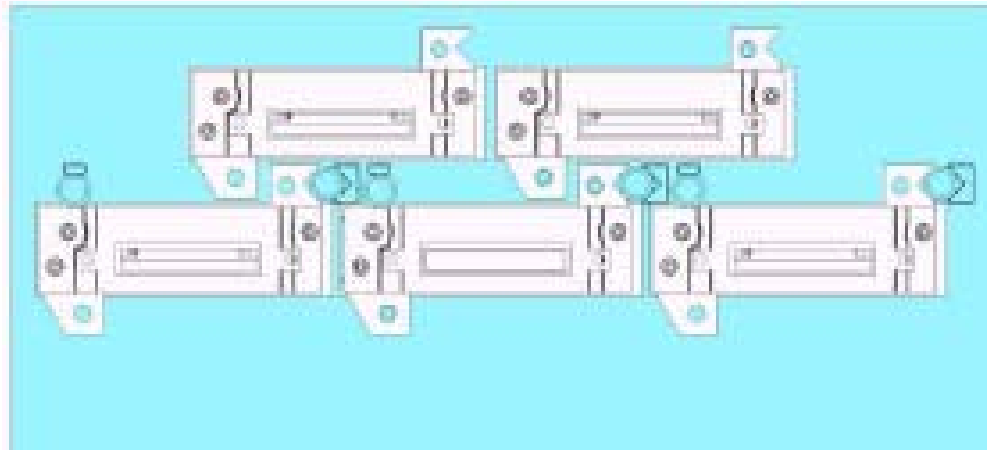
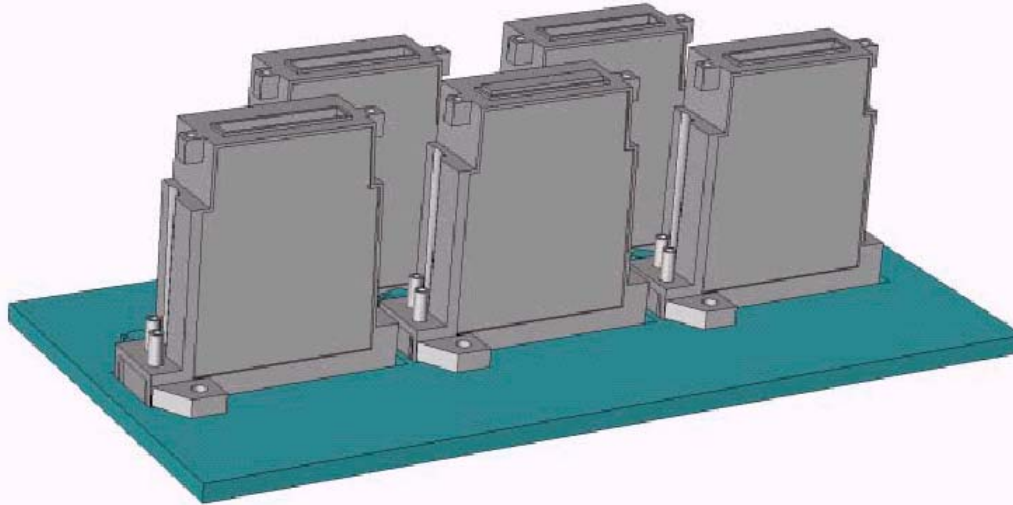
Type	nozzle	dpi	ink	pl	KHz	built in Heater		Application
						with	without	
L	512	360	Oil Solvent	42	7.6	X	X	Single-pass
S			UV Special	14	13	(X)	X	Fine print image

X available (X) coming soon

- Shear mode / 3 Cycle Operation
- 256 x 2 rows = 512 nozzle
- 180 x 2 rows = 360 native dpi
- Native 360 dpi (npi)
- Compact (85x67x20 mm)
- Light (ca.85 g)
- Same Design
- Easy to stitch
- Universal to ink type



3.1 Easy to Stitch

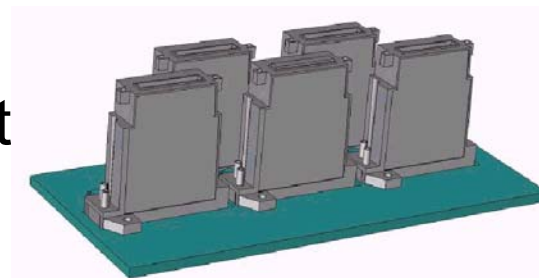


4.1 Type 512L_/LH

Non-Aqueous Model

Type	nozzle	dpi	ink	pl	KHz	built in Heater		Application
						with	without	
L	512	360	Oil Solvent UV Special	42	7.6	X	X	Single-pass
S				14	12.8	(X)	X	Fine print image

- Ideal for **Single-pass** print
 - Coding/Marking
 - Industrial
- (Outdoor) Signage



Single Pass



KONICA MINOLTA



Multi Color



KONICA MINOLTA



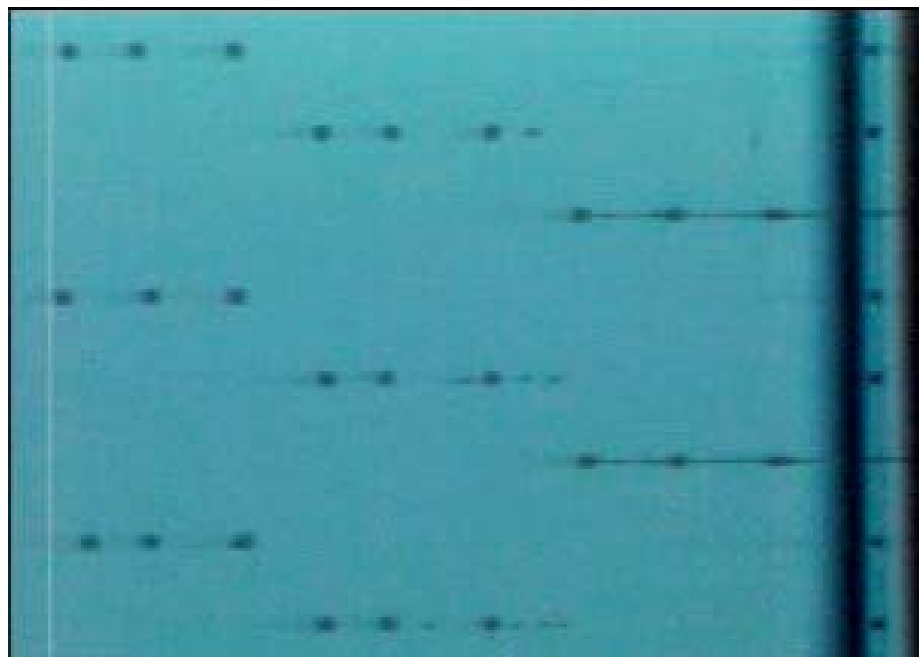
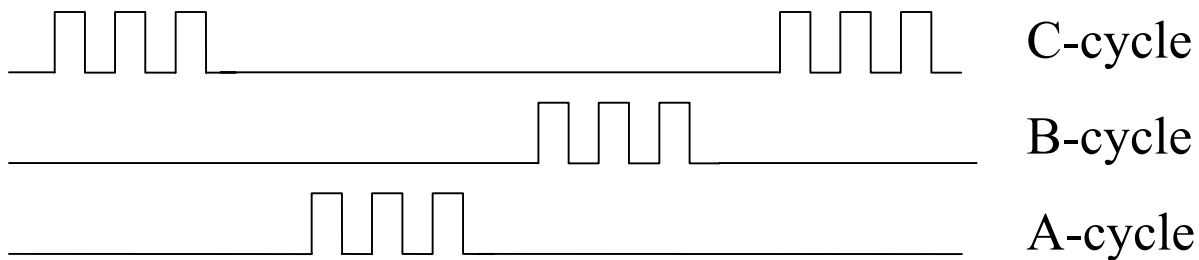
4.2 Type 512S_/SH

Non-Aqueous Model

Type	nozzle	dpi	ink	pl	KHz	built in Heater		Application
						with	without	
L	512	360	Oil Solvent UV Special	42	7.6	X	X	Single-pass
S				14	12.8	(X)	X	Fine print image

- Fine Image Quality (Smaller Drop Size)
- Higher Driving Frequency
- **4 Step Gray Scale**
 - *Good enough ? Yes !*
 - *Simple / Realistic*
 - *Still Single-pass possible*
- (Indoor) Signage
- Industrial - where small drop size required

5. Gray Scale Technology

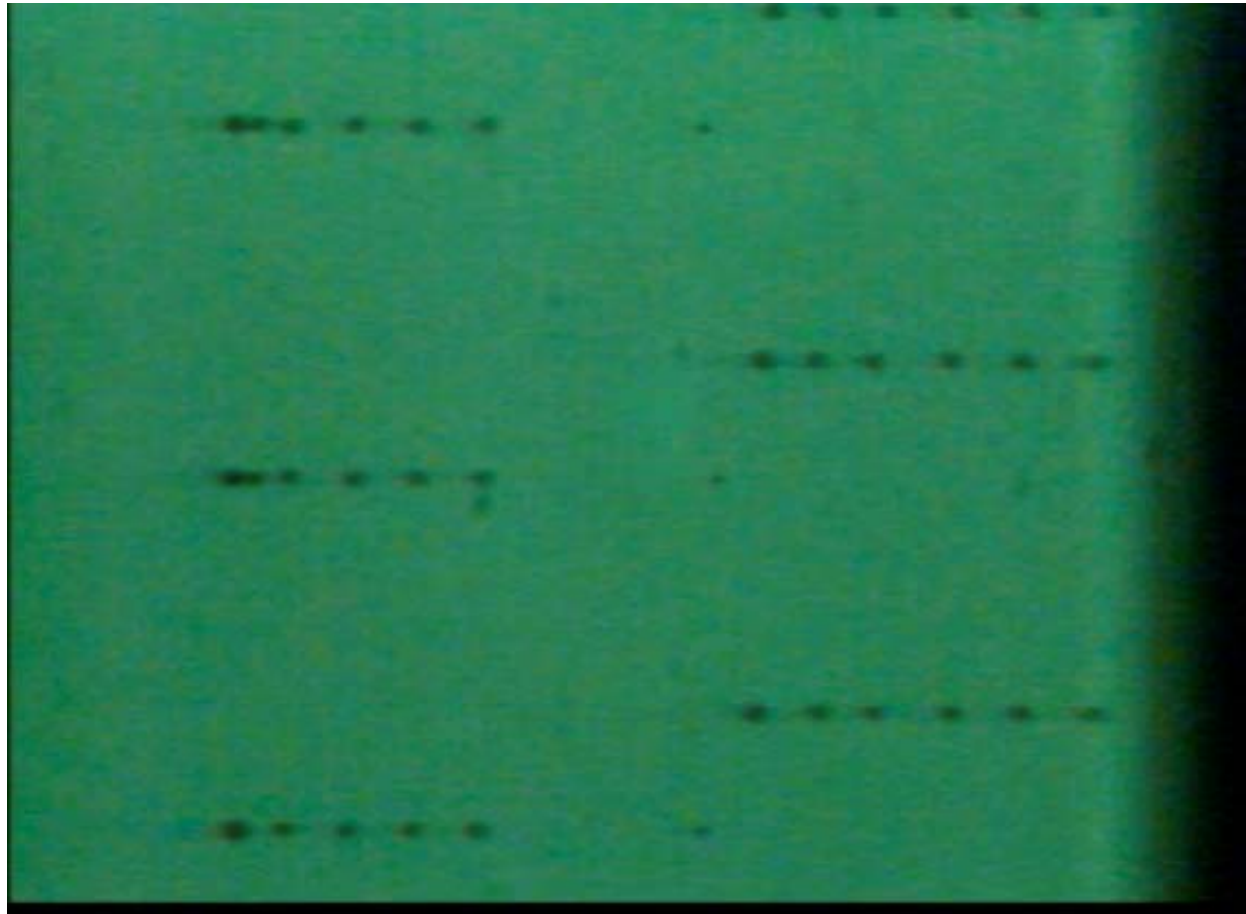


5. Gray Scale Technology

What's New ?

 Step Gray Scale !!

Multi Step Gray Scale

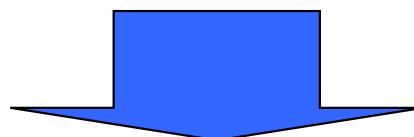


512 Nozzle : New Family Member

Non-Aqueous Model

Type	nozzle	dpi	ink	pl	KHz	built in Heater		Application
						with	without	
L	512	360	Oil Solvent UV Special	42	7.6	X	X	Single-pass
S				14	12.8	(X)	X	Fine print image

X available (X) coming soon



Type	nozzle	dpi	ink	pl	KHz	built in Heater		Application
						with	without	
L	512	360	Oil Solvent UV Special	42	7.6	X	X	Single-pass
M				14	12.8	X	X	Fine print image 4 Step Gray Scale
S				4-6	(TBD)	(X)	(X)	Super fine image Multi Gray Scale

X available (X) coming soon