



Introduction

RANGE VIEWER is 3D scanning software for Windows 7, Windows Vista or Windows XP. It has the following features.

- Controls Konica Minolta's RANGE7/5 noncontact digitizer to scan works in 3D.
- Imports and processes 3D shapes of scanned works as 3D data.
- Reproduces 3D images by scanning works multiple times from different angles.
- Converts data to formats used by 3D processing software of other companies.

Operating Environment

To gain full use of RANGE VIEWER, it must be installed in the below computer environment.

- Computer (Including display, mouse and keyboard)
 - CPU : Intel Core2 Duo, Xeon or faster
 - Memory : 4GB or more
 - HDD : 20MB or more space required for installation
 - Graphics : OpenGL graphic board capable of displaying 16-bit colors in 1280 x 1024 resolution or better
 - Display : 1280 x 1024 or higher resolution *1
 - Other : Optical drive x 1 *2 (Required for installation)
USB 2.0 port x 1

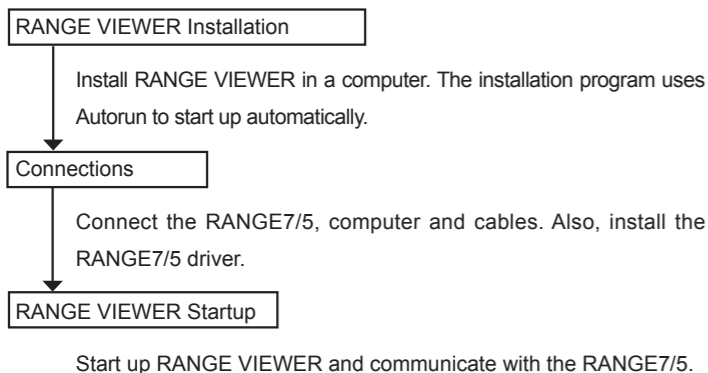
- *1 RANGE VIEWER cannot fully display works on low resolution displays.
- *2 By "optical drive", it is meant CD-ROM media drives such as DVD±R drives, DVD-ROM drives and CD-ROM drives.

- Support OS
 - Windows 7 Professional (64bit)
 - Windows Vista Business SP2 (64bit)
 - Windows XP Professional x64 Edition SP2 (64bit)

The screen shots in this Installation Guide are sample displays when Windows Vista is used.

Setup

The setup procedure for RANGE VIEWER is as follows.



RANGE VIEWER Installation

Install RANGE VIEWER in a computer as follows. With computers that support Autorun, the installation program starts up automatically when the installation CD of this software is loaded into the optical drive.

- To install the software, log in with administrator privileges.

- When "User Account Control – Windows needs permission to continue" dialog box appears, click the [Continue] button to install the software.
- When Windows XP is used, "The software has not passed Windows Logo testing..." message will appear. Click the [Continue] button to install the software.
- ◆ If RANGE VIEWER is already installed on the computer and it is desired to install a different language of the same version of the software, please uninstall the existing RANGE VIEWER and then install the desired language of RANGE VIEWER.

RANGE VIEWER Installation Procedure

1 Turn ON power to the computer and start up Windows.

2 Load the installation CD of this software into the optical drive of the computer.

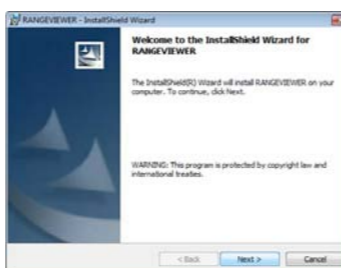
The installation program starts up automatically from Autorun of Windows.

When "RANGE VIEWER Setup" dialog box appears, select [English] from the [Language] list box and click the [OK] button.



3 Installation begins and the Install Shield Wizard dialog box appears.

Click the [Next] button and proceed with installation as instructed by the windows in step 5 and beyond.



- ◆ When Windows XP is used, "Found New Hardware Wizard" dialog box appears. Select [No, not this time] and click the [Next] button.

In the next dialog box, select [Install from a list or specific location] and click the [Next] button.

In the next dialog box, select [Search for the best driver in these locations.] and [Search removable media (floppy, CD-ROM...)], and then click the [Next] button.

- ◆ The installation program does not run automatically in computers without Autorun support or if Autorun is turned off, therefore start up the installation program manually as explained in step 4.

4 If the installation program does not start up automatically, select the installation program file and start it up manually as explained in steps (1) ~ (3) below.

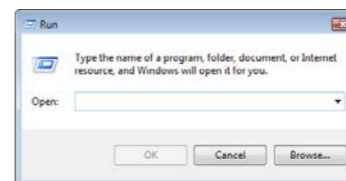
- ◆ These steps are not necessary if the installation program starts up automatically from Autorun. In such case, proceed to step 5 and continue with installation as instructed by the windows.

- 1) Select [All Programs] – [Accessories] – [Run] from the Start menu in Windows.
- 2) The "Run" dialog box appears, therefore click the [Browse] button to the "Browse" dialog box. Select the installation program of this software and click the [Open] button.

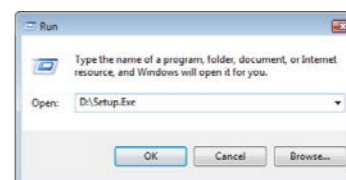
- The installation program of this software is in the Setup.exe file on the installation CD.

- You may also directly input the path (drive number of the optical drive, folder name and program file name) to the installation program in the [Open] box of the dialog box.

Example: For optical drive D [D:\Setup.exe]



- 3) Click the [OK] button to execute the installation program. Proceed with installation as instructed by the windows in step 5 and beyond.



5 The License Agreement dialog box appears.

A window concerning the license agreement appears. Read it carefully and, if you agree to the terms, select "I accept the terms in the license agreement" and click the [Next] button to proceed with installation.



- ◆ If you do not agree with the terms, select "I do not accept the terms in the license agreement" and click the [Cancel] button.



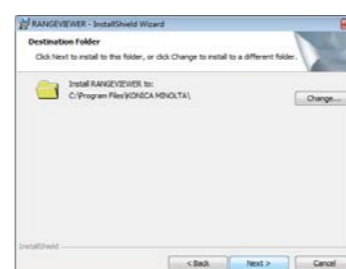
The confirmation message asking whether to cancel installation or not. Therefore, if you do not agree with the terms, click the [Yes] button to stop the installation program.



- ◆ You agree to the terms of the license agreement by continuing with the installation of this software.

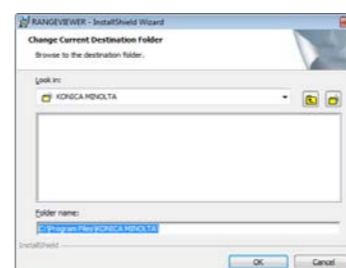
6 A dialog box appears for selecting the destination folder where to install this software.

After confirming the destination folder, click the [Next] button.



- At the default settings, the destination folder is created in the Program files folder of the C drive where the OS is installed, and this software is installed there.

- To specify a destination folder, click the [Change] button, which opens the Change Current Destination Folder dialog box, and select a folder for installing the software.



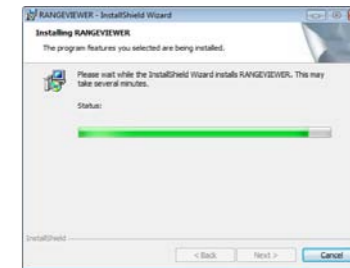
- The destination folder can also be newly created from this same dialog box.

7 A dialog box appears explaining that preparations for installation have been completed.

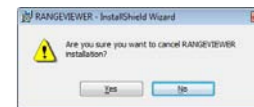
Read it and click the [Install] button.



8 During installation, progress is shown in a progress bar.



- ◆ To cancel installation, click the [Cancel] button. A confirmation message appears asking whether to cancel installation or not. To cancel installation, click the [Yes] button. To continue installation, click the [No] button.



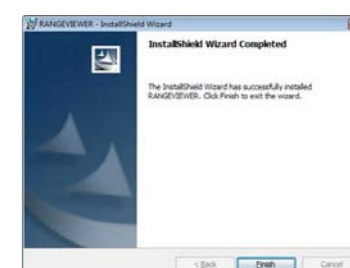
- ◆ If installation is interrupted, a dialog appears explaining that and the installation program quits.



Click the [Finish] button to close the dialog box.

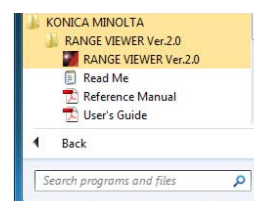
9 A dialog box appears explaining that installation has completed.

Click the [Finish] button to quit the installation program.



10 Check that the software was installed in the selected destination folder using Windows Explorer, etc.

The PDF files of the instruction manuals (Reference Manual and User's Guide) will also have been installed. If you want to view the instruction manuals while using the software, select Help – Instruction Manuals from the menu bar.



Connections

Connect the RANGE7/5 to the computer. Use a USB cable for the connection.

SAFETY PRECAUTION

Before use, carefully read the user manuals of the RANGE7/5 and computer in order to use equipment safely. Improper handling can lead to fire and electric shock.

- The first time that the RANGE7/5 is connected to the computer, the driver must be installed, therefore log in with administrator privileges and install the driver.

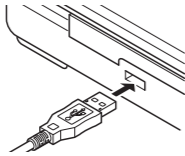
Step 1 Connect the RANGE7/5 to the computer.

1 Connect the included USB cable to the RANGE7/5.

- For connection procedures, see the RANGE7/5 user's manual.

2 Connect the other end of the USB cable to a USB port on the computer.

- Directly connect the USB cable to a USB port on the computer. Do not go through a USB hub, etc.
- RANGE7/5 supports hot plug connections. Before connecting to it, power to the computer does not have to be OFF.



Step 2 Install the driver.

- When "User Account Control – Windows needs permission to continue" dialog box appears, click the [Continue] button to install the driver.

- When Windows XP is used, "The software has not passed Windows Logo testing..." message will appear. Click the [Continue] button to install the software.

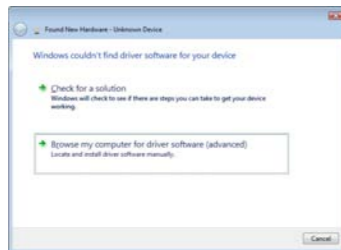
1 The RANGE7/5 is detected. Select the driver installation method.

Click "Locate and install driver software (recommended)".



2 Select the method for finding the driver.

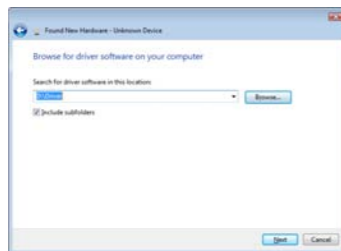
Click "Browse my computer for driver software (advanced)".



3 Specify the driver search location.

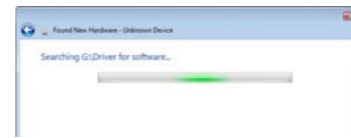
Insert the RANGE VIEWER installation CD into the CD/DVD drive of the computer.

Click [Browse...] button to specify the "Driver" folder (ex. D:\Driver) on the installation CD.



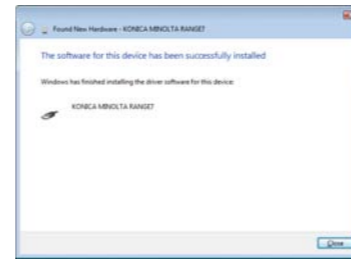
4 Click "Next" at the bottom of the dialog box to proceed with installation.

When driver installation has been completed, a dialog box appears explaining that.



5 Click the [Close] button to quit the detection wizard.

- When properly installed, the RANGE7/5 driver can be used as the interface for communicating with the RANGE7/5.



RANGE VIEWER Uninstallation

This software is uninstalled using the standard Windows procedure.

- To uninstall the software, log in with administrator privileges.
- When this software is uninstalled, the destination folder and shortcut icons created on the desktop and in the Programs menu are deleted. There is no need to worry about deleting data saved in the destination folder or data folders even when the software is uninstalled.

RANGE VIEWER Uninstallation Procedure

1 Turn ON power to the computer and start up Windows.

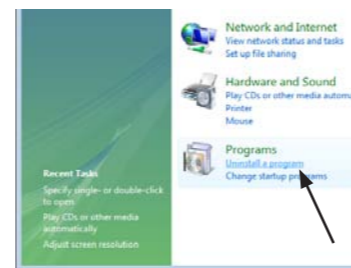
2 Select [Control Panel] from the Start menu in Windows.

The Control panel window appears.



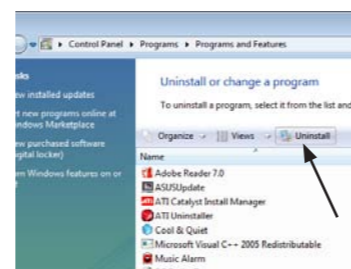
3 Click "Uninstall a program" in the Control Panel window.

The Uninstall or change a program window appears with a list of currently installed programs.



4 Select "RANGE VIEWER" from the program list.

When the program you want to delete is selected, the [Uninstall] button is activated.



5 Click the [Uninstall] button.

A confirmation message appears asking, "Are you sure you want to uninstall RANGE VIEWER?" Click the [Yes] button to start uninstallation.



- Click the [No] button to cancel uninstallation and return to the "Uninstall or change a program" window.

6 When the "User Account Control – Windows needs permission to continue" dialog box appears, click "Allow" to proceed with uninstallation.

7 During uninstallation, progress is shown in a progress bar.

8 After RANGE VIEWER has been deleted, the "Uninstall or change a program" window reappears.

- Check that RANGE VIEWER has been deleted from the program list.

Driver Uninstallation

The USB driver for Konica Minolta's RANGE7/5 does not have to be deleted when uninstalling this software, but to uninstall it, do so as follows.

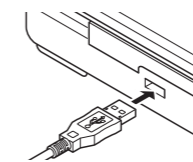
- To uninstall the driver, log in with administrator privileges.

Driver Uninstallation Procedure

1 Turn ON power to the computer and start up Windows.

2 Connect the RANGE7/5 to the computer.

- Connect the open end of the USB cable that is connected to the RANGE7/5 to a USB port on the computer.

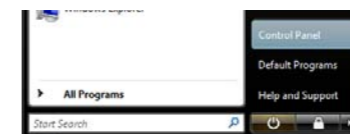


- Directly connect the USB cable to a USB port on the computer. Do not go through a USB hub, etc.

- RANGE7/5 supports hot plug connections. Before connecting to it, power to the computer does not have to be OFF.

3 Select [Control Panel] from the Start menu in Windows.

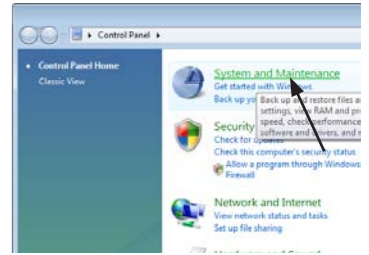
The Control panel window appears.



- When "User Account Control – Windows needs permission to continue" dialog box appears, click the [Continue] button to install the driver.

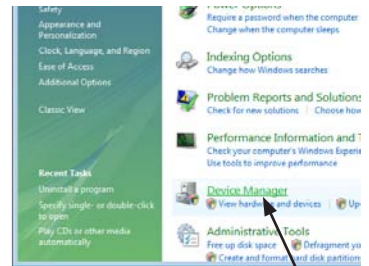
4 Click "System and Maintenance".

The system maintenance window appears.

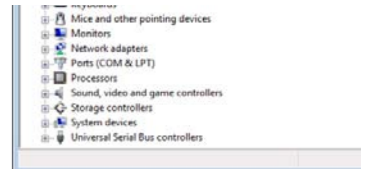


5 Click "Device Manager" amongst the window tasks.

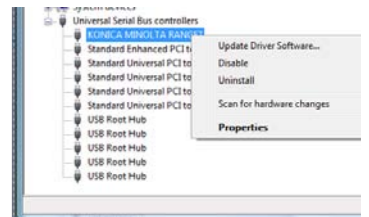
When the "User Account Control – Windows needs permission to continue" dialog box appears, click "Continue". The Device Manager dialog box appears.



6 Activate the Universal Serial Bus Control (click [+] next to the icon to show [-] in the Device Manager list, and select the KONICA MINOLTA RANGE7 driver.



7 With the KONICA MINOLTA RANGE7 driver selected, right-click the mouse to open a pop-up menu and select "Uninstall" there.



- The "Confirm Device Uninstall" dialog box appears, therefore place a checkmark in the "Delete the driver software for this device" checkbox, and click the [OK] button.



8 After uninstallation has been completed, check that the KONICA MINOLTA RANGE7 driver in the USB Controller has been deleted from the Device Manager list.

- Close the Device Manager dialog box to quit the device manager.

