

Using SG Commander to set the Memory Switch (For SHOT-302GS)

To control the rotating stage using the control box SHOT-302GS, you need to use the utility software "SG Commander" to change the memory switch settings.

Following the procedures below, install "SG Commander" and change the memory switch settings.

- MEMO**
- Check in advance that the SHOT-302GS is connected to a computer.
 - For details on how to connect the SHOT-302GS to a computer, refer to the rotating stage instruction manual.

Installing

For installation, log on as a user with Administrator authority.

- 1) Open the "English" folder in the Rotating Stage Setup Disk, and execute "setup.exe".

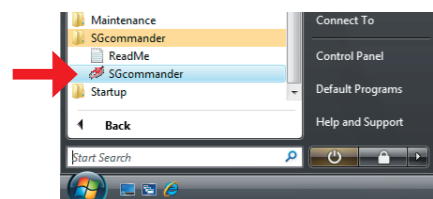


- 2) Following the displayed installation wizard instructions, install SG Commander.

- When the "User Account Control - Windows needs permission to continue." message is displayed, click [Allow].
- Agree to the license agreement, enter the user information including a company name, and complete installation.

Starting SG Commander

- 1) Start SG Commander.



- 2) Configure the SG Commander default settings on the screen.

- 1) Machine Type

Select "SHOT-302GS" and click the [Next] button.

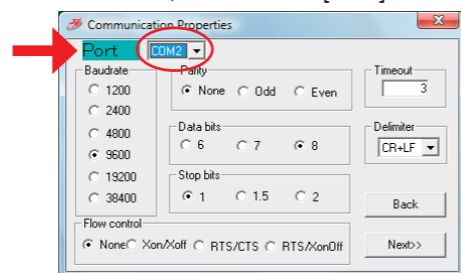


- 2) Communication Mode

Click the [Next] button again.

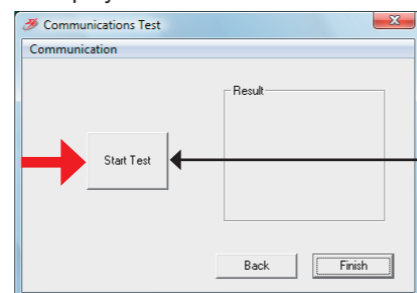
- 3) Communication Properties

From the connection destination list box, select the communication port to which the SHOT-302GS is connected, and click the [Next] button.



- 4) Communications Test

Click the [Start Test] button to start the connection test and to display the results.



- When the connection succeeds:



Click the [Finish] button to complete the default settings and to display the main screen.

- When the connection fails:



Check that the SHOT-302GS power is turned ON and/or the communication cables are connected correctly, and click the [Start Test] button again.



Changing the Memory Switch Settings

To change the memory switch settings, write the memory switch setting file descriptions provided by KONICA MINOLTA SENSING into the control box using "SG Commander".

- MEMO**
- The memory switch setting file "RANGEVIEWERsetting.csv" is saved in the "English" folder in the Rotating Stage Setup Disk.

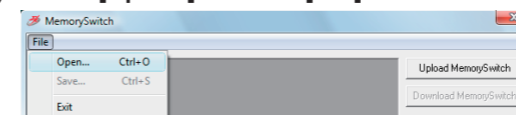
Note Be sure to observe the method described in this manual to change the memory switch settings.

- 1) Click the [MemorySwitch] button on the main screen.

The "MemorySwitch" dialog box appears.

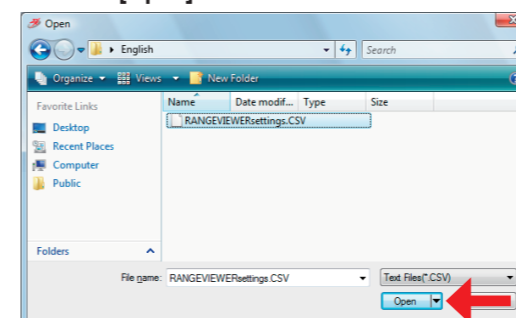
- 2) Open the memory switch setting file.

- 1) Select [Open...] from the [File] menu.

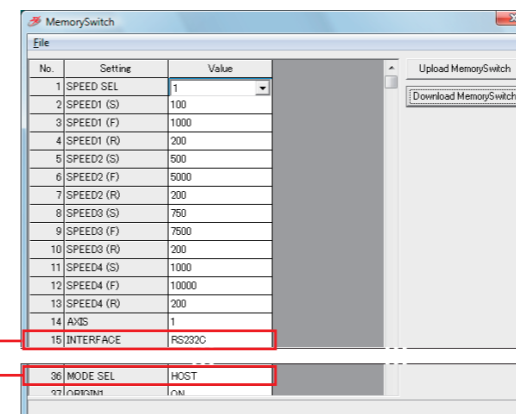


The "Open" dialog box appears.

- 2) Select the "RANGEVIEWERsetting.csv" file from the "English" folder in the Rotating Stage Setup Disk, and click the [Open] button.



Uploaded descriptions of the memory switch setting file are displayed on the "MemorySwitch" dialog box.

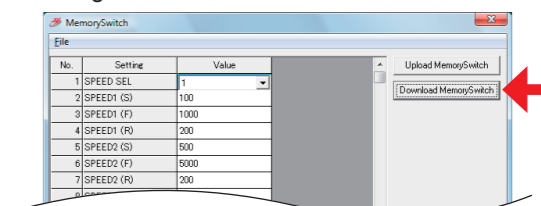


- Note**
- Do not change the setting descriptions.
 - If you should change descriptions of "INTERFACE(15)RS232C" and/or "MODE SEL(42)HOST", you will become unable to change the memory switch settings using SG Commander afterward. Particular attention to this is required.

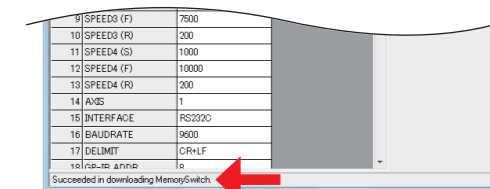
- 3) Download the setting descriptions to the control box.

Click the [Download MemorySwitch] in the "MemorySwitch" dialog box.

- The setting descriptions displayed on the "MemorySwitch" dialog box are sent and downloaded to the control box.



- When downloading normally finishes, the message "Succeeded in downloading MemorySwitch." is displayed on the status bar at the bottom of the dialog box.



- 4) Exit SG Commander.

- 1) Select [Exit] from the [File] menu on the "MemorySwitch" dialog box.

Close the "MemorySwitch" dialog box, and return to the SG Commander main screen.

- 2) Click the [End] button and exit SG Commander.



The memory switch setting changes are complete.

The memory switch setting values to be changed from those at factory setting using the memory switch setting file "RANGEVIEWERsetting.csv" are shown below: (The number in brackets shows the memory switch number)

- 1) AXIS(14) 1
- 2) DIVIDE1 (23)..... 80
- 3) ORG1 (S)(51)..... 20000
- 4) ORG1 (F)(52)..... 200000