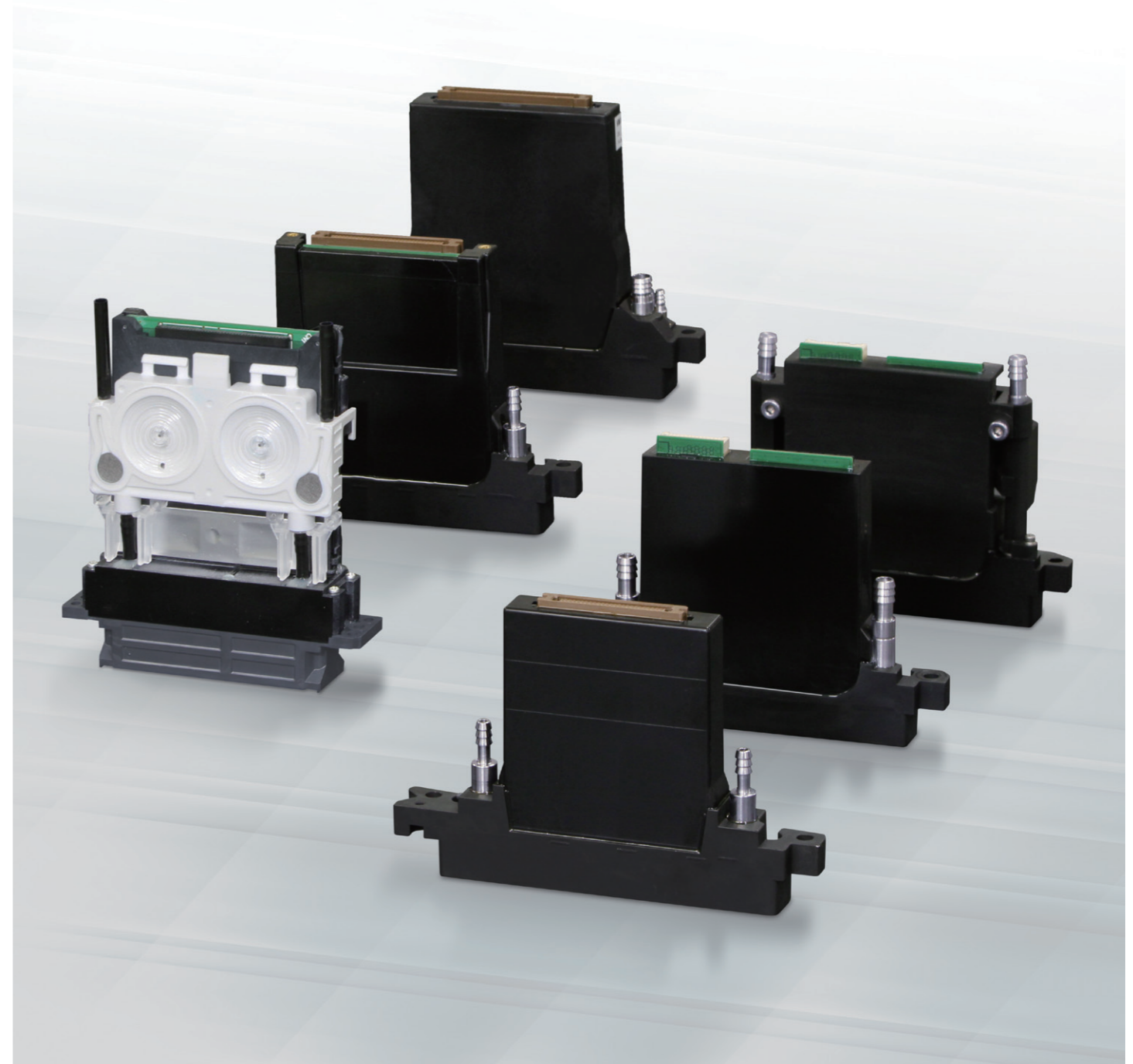


Konica Minolta's Inkjet Printhead Series



Water-based	UV	Solvent	Ink Type	Drop Size	Driving Mode			
					Number of Nozzles	Shear 3-cycle	Bend	
L	M	S	L	M	S	512	1024	800
						512	1024	800
						512	1024	800
M	M	M	L	M	S	512	1024	800
						512	1024	800
						512	1024	800
S	M	M	L	M	S	512	1024	800
						512	1024	800
						512	1024	800

without Heater with Heater Digital Waveform Analog Waveform

*Please contact us for blanks.

KONICA MINOLTA, INC.
IJ component business unit

No.1 Sakura-machi, Hino-shi, Tokyo 191-8511, Japan
 Tel: +81-42-589-3701 Fax: +81-42-589-3865



<https://www.konicaminolta.com/global-en/inkjethead/index.html>

Products you can rely on for High-Performance Printing

Konica Minolta Inkjet Print head Series

Inkjet Print head Series Lineup

Konica Minolta's inkjet printheads are featured by high speed and high density to better respond to varied throughput and resolution needs with a combination of droplet size and numbers of nozzles.

A Wide Range of Solutions Covering User Applications

The reliability enjoyed with Konica Minolta printheads is the direct result of high-level nozzle processing precision and material compatibility based on our own material technology. This ensures that these devices are suitable for diverse user applications, from high-quality graphic printers to equipment for PCB, LCD, OLED and other electronic applications.

Designed to Contribute to the Development of Print Systems

Konica Minolta will offer effective solutions to customers in development of print systems. Inkjet print heads with our own technologies and reliability provide new opportunities and more value for industrial printing.

Shear Mode (3-cycle)

		KM512SHX	KM512MN KM512MH	KM512LN KM512LH	KM1024SNB KM1024SHB	KM1024MNB KM1024MHB	KM1024LNB KM1024LHB
Waveform		Digital	Digital	Digital	Digital	Digital	Digital
Number of Nozzles		512	512	512	1024	1024	1024
Resolution (npi)		360	360	360	360	360	360
Frequency (kHz)		19.5	12.8	7.6	30	12.8	7.6
Drop Size (pl)		4	12	41	6	12	42
Grayscale (levels)		4	4	1	8	4	2
Print Width (mm)		36	36	36	72	72	72
Ink Type	Solvent	✓	✓	✓	✓	✓	✓
	UV	✓	(KM512MH)	(KM512LH)	(KM1024SHB)	(KM1024MHB)	(KM1024LHB)
	Water-Based						
Dimensions (mm)=W×D×H		67×40×73	67×40×72	67×40×72	131.2×17.6×89.4	131.2×17.6×89.4	131.2×17.6×89.4
Weight (g)		90	95	95	140	140	145

Shear Mode (Independent)

Bend Mode

		KM512iLNB-30	KM1024iSHE	KM1024iMHE-D	KM1024iLHE-30	KM1280iMHH	KM1800iSHC-C	KM512iMAB-C	KM1024iSAE-C	KM1024iMAE-C	KM1024aSHE	KM1024aLHG-RC	KM800	KM800-D	KM800H-MR
Waveform		Digital	Digital	Digital	Digital	Digital	Digital	Digital	Digital	Digital	Analog	Analog	Analog	Analog	Analog
Number of Nozzles		512	1024	1024	1024	1280	1776	512	1024	1024	1024	1024	800	800	800
Resolution (npi)		180	360	360	360	450	600	180	360	360	360	360	360	360	360
Frequency (kHz)		27	56	45	27	40	87	20	44	28	56	25.6	18/10	18/10	18/10
Drop Size (pl)		30	6	13	30	10	3.7	13	7.5	14	6	27	5-22/30	5-22/30	5-22/30
Grayscale (levels)		8	8	8	8	16	8	8	8	8	8	8	4	4	4
Print Width (mm)		72	72	72	72	72	75	72	72	72	72	72	56.4	56.4	56.4
Ink Type	Solvent	✓	✓	✓	✓	✓	✓				✓	✓	✓	✓	✓
	UV		✓	✓	✓	✓	✓				✓	✓			✓
	Water-Based						✓	✓	✓	✓		✓	✓	✓	
Dimensions (mm)=W×D×H		131.2×17.6×89.4	131×18×94	131×18×94	131×18×94	131.2×17.6×104.5	138×20×107	131.2×17.6×89.4	131×18×96	131.2×17.6×94	131.2×17.6×91	131.2×19.5×99.2	99×18.8×109.4	99×18.8×109.4	99×18.8×119
Weight (g)		130	150	150	150	185	210	140	150	150	150	200	100	120	150