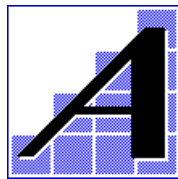

RadWorks WebViewer 5.1

DICOM Conformance Memo

Version : 1.0
Status : Final
Document Number : DCM-1022-001/00-001



© 2001
Applicare Medical Imaging B.V.
(a GE Company)

Author	Position	Release Date	Signature
Maurice Dohmen	Program Manager	07-Mar-2001	

Reviewer	Position	Review Date	Signature
Wijnand Stijn	Manager QA		
Michael Dubbeldam	Software Architect		
Harm-Jan Wessels	Director R&D		

CONTENTS

1	Introduction	3
1.1	Scope and purpose	3
1.2	Sources and Related Documents.....	3
1.3	Revision History	3
2	Implementation Model.....	4
3	DICOM Conformance.....	5

1 Introduction

1.1 Scope and purpose

The DICOM Conformance of RadWorks WebViewer 5.1 is fully determined by the DICOM application WebViewer is hosted on: RadWorks 5.1 and/or RadStore 1.0. This memo is intended as a substitute for a separate DICOM Conformance Statement. It identifies the sections of the respective conformance statements that either do or do not apply. These DICOM conformance statements can be found on the Applicare website at <http://www.applicare.com/related/dicom/index.html>

1.2 Sources and Related Documents

Document ID	Title	Author	Version	Status	Date
DCM-1015-050/00-001	DICOM Conformance Statement RadWorks	Jan-Pieter Diender	5.1	Final	2-Oct-2000
DCM-1019-001/00-001	DICOM Conformance Statement RadStore	Henk van den Brink	1.1	Final	2-Jan-2001
QA-1001-003/00-001	QSH	Wijnand Stijn	Current	Final	Current

1.3 Revision History

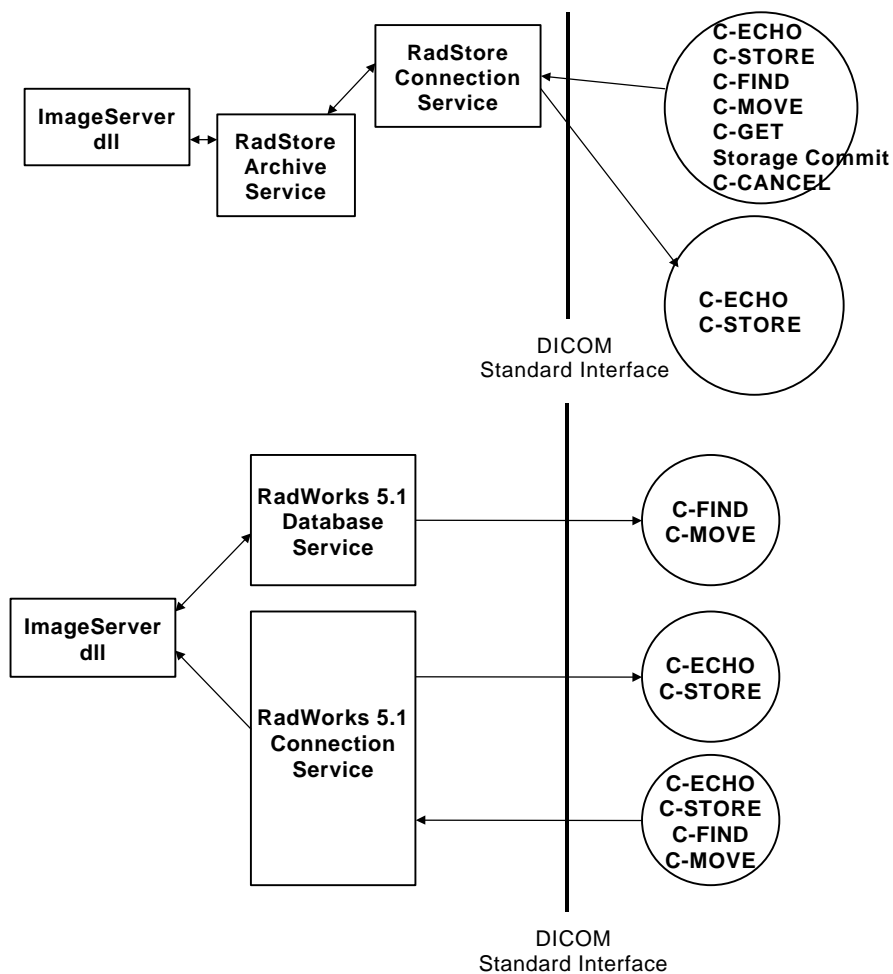
Version	Status	Date	Comment
1.0	Draft 1	28-Aug-2000	First version
1.0	Draft 2	31-Aug-2000	Comments from MCD, JPD
1.0	Final	07-Mar-2001	Added link to RW and RS DICOM Conf Statements

2 Implementation Model

The WebViewer consists of two main applications: a server and a client. For this document focus is on the server.

The WebViewer server consists of a WebViewer-specific module (dll) which runs as part of Microsoft Internet Information Server. This dll receives all HTTP requests from any WebViewer client, and processes them. The WebViewer dll communicates with RadWorks and/or RadStore services, for database query/retrieve and study file retrieve.

All DICOM communications are handled by the respective services. If WebViewer server is co-hosted on RadWorks and RadStore together, both sets of services are used. For easy reference, both implementation models are depicted below.



3 DICOM Conformance

WebViewer server adheres to the DICOM Conformance statement of the services it is hosted on. This section adds remarks to the various numbered sections of the respective DICOM Conformance statements (<http://www.applicare.com/related/dicom/index.html>).

3.1 SOP Classes

Although the hosted services may support more SOP Classes, WebViewer clients are only able to request and display objects belonging to the following SOP Classes:

WebViewer Storage SOP classes supported for display	
SOP Class Name	SOP Class UID
CR Image	1.2.840.10008.5.1.4.1.1.1
DX Image for Presentation	1.2.840.10008.5.1.4.1.1.1.1
MG Image for Presentation	1.2.840.10008.5.1.4.1.1.1.2
CT Image	1.2.840.10008.5.1.4.1.1.2
US Multi-frame Image (Retired)	1.2.840.10008.5.1.4.1.1.3
US Multi-frame Image	1.2.840.10008.5.1.4.1.1.3.1
MR Image	1.2.840.10008.5.1.4.1.1.4
NM Image (Retired)	1.2.840.10008.5.1.4.1.1.5
US Image (Retired)	1.2.840.10008.5.1.4.1.1.6
US Image	1.2.840.10008.5.1.4.1.1.6.1
SC Image	1.2.840.10008.5.1.4.1.1.7
XA Image	1.2.840.10008.5.1.4.1.1.12.1
XF Image	1.2.840.10008.5.1.4.1.1.12.2
XA Bi-Plane Image	1.2.840.10008.5.1.4.1.1.12.3
NM Image	1.2.840.10008.5.1.4.1.1.20
IO Image for Presentation	1.2.840.10008.5.1.4.1.1.1.3

3.1.2.2 Send to a remote system

WebViewer clients cannot actively designate studies to be sent to a remote system. However, automatic routing rules can be configured using the standard RadWorks or RadStore functionality.

3.1.2.3 Query a remote database

If the WebViewer server is hosted on RadWorks services, the WebViewer client can do a remote query, which is relayed by the WebViewer server as a Study Root Query to the Database service, and then to a remote system. Only Study Root Query is supported.

3.1.2.4 Retrieve from a remote system

If the WebViewer server is hosted on RadWorks services, the WebViewer client can do an import action for a selection of studies. This will initiate the transfer of images from the remote system to the RadWorks database (effectively acting as a cache) on the WebViewer server. The imported studies thus become available for viewing to the WebViewer client.

3.1.2.5 Print to a remote Laser Imager

Not supported in WebViewer.

3.1.2.6 Retrieve a Modality Worklist from a Remote System

Not supported in WebViewer.

3.1.2.7 Send Modality Performed Procedure Step Messages to a Remote System

Not supported in WebViewer.

3.1.3.3.3 SOP Specific Conformance Statement for SOP Class Query

If WebViewer is hosted on RadStore, the following fields are added to the RadStore database (by means of applying the RadStore 1.0 SPa5 software patch):

Additional keys for Study Root Query/Retrieve			
Level	Description	Tag	Type
Study	Series Description	(0008,103E)	O
Study	Number of Frames	(0008,0028)	O
Study	Image Type	(0008,0008)	O

3.2.2.2.3 DICOM Media Server AE: Write images

Not supported in WebViewer.

7 Support of extended character sets

WebViewer supports the following character sets:

Support Character Sets	
Name	Value
Default Character repertoire	ISO-IR 6
Latin – 1 character repertoire	ISO-IR 100

8 RadWorks Private IODs

WebViewer supports display/application of the RadWorks private IODs: Annotations, Image Transformation.