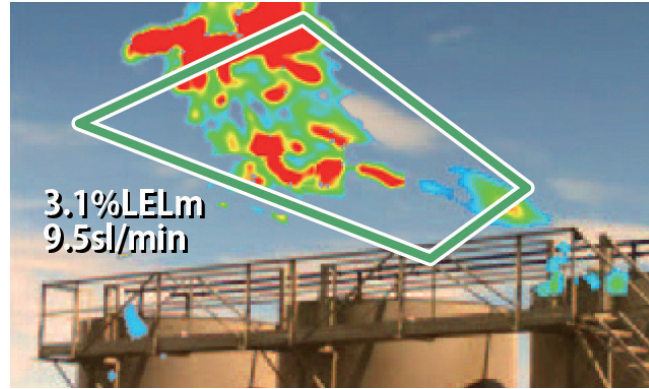


## Implementation of Quantification

With the option to connect an additional display device and mounting on a tripod, the capability exists to estimate a flow rate for a gas plume. Quantification can be indispensable for reporting GHG emissions and prioritizing specific maintenance work orders.



To implement estimation, conditions must be set at the time of recording.

## Specifications (GMP02)

Item	Product Specification	
Model	GMP02	
Camera	Weight	2.5kg (5.5lb) *Including Battery
	Size (W×H×D)	155[W] × 185[H] × 281.5[D] mm (6.10[W] × 7.28[H] × 11.08[D] in)
	Water and Dust Protection	IP54
Power Supply	Camera	Li-ion 14.4V 3.45Ah <3h
Detectable Gas		Methane, Ethane, Propane, Butane, Pentane, Hexane, Heptane, Octane, Ethylene, Isoprene, Pentene, Benzene, Toluene, Xylene, Ethylbenzene, Propylene, Methanol, Ethanol, Formaldehyde, Acetaldehyde, Acetone, Methyl ethyl ketone, Methyl isobutyl ketone, Ethers, Esters, Hydrocarbon gas except Acetylene

- Inspection Support Solution uses Konica Minolta's FORXAI technologies.
- KONICA MINOLTA provides repair service if malfunction occurs.
- FORXAI is registered trademark of KONICA MINOLTA, INC.
- KONICA MINOLTA and KONICA MINOLTA's logo are registered as trademarks of KONICA MINOLTA, INC.
- The specification and the external appearance of a product are subject to change without notice.
- Battery life in Specifications shows typical values.
- The color tone of this catalog may differ from the actual camera body and display screen due to printing.

Export authorization of U.S. Government may be required for this camera under US Export Administration Regulations (EAR).



**RETHINK  
THE POWER OF  
IMAGING**

### Manufacturer

Imaging-IoT Solution Business Unit  
**KONICA MINOLTA, INC.**  
2970 Ishikawa-machi, Hachioji-shi Tokyo 192-8505, Japan



**Official Website  
for Inspection Support Solution**  
<https://www.konicaminolta.com/us-en/gas/>

### Sales Outlet

Monitoring Business Department

**Konica Minolta Sensing Americas, Inc.**

101 Williams Drive, Ramsey NJ 07446 E-mail : [iss\\_contact@konicaminolta.com](mailto:iss_contact@konicaminolta.com)



## User-friendly interface

Switching between display screens and recording, can be executed smoothly and seamlessly, even with work gloves on. The comfortable side-grip and button design layout allow for relaxed field operation.



# FORXAI

## Inspection Support Solution

Improving your regulatory compliance and stable operation



Easy & secure leak detection inspections

Lower the risk of accidents  
at hazardous facilities

Ensure compliant  
regulatory data management



Giving Shape to Ideas

# Do you have any problems with inspection work?

Overlooked leaks? / Lack of experienced leak detection inspectors? / Too much time spent managing data? / Inspection records exceeding capacity of server storage?

## Benefit by role



### Inspection Staff

- Leak detection becomes quicker and easier
- Inspect from a safer distance



### Inspection Manager

- Inspectors are able to operate the camera in a shorter training period
- Inspection schedule is easily confirmed using data history



### Compliance Department

- Regulatory recordkeeping & reporting becomes easier

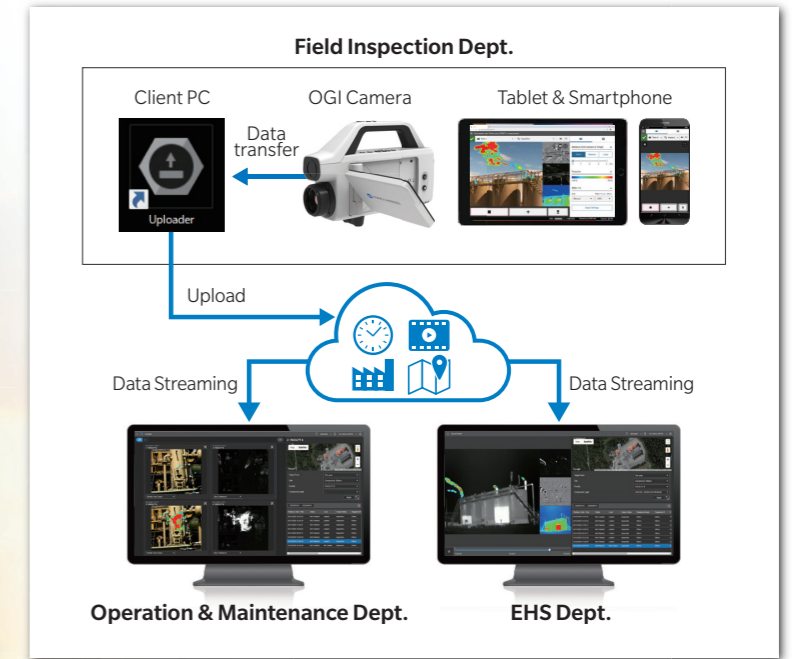


### Chief Executive Officer

- Lower the risk of unplanned shutdowns caused by an accident



## GMP02 System Outline

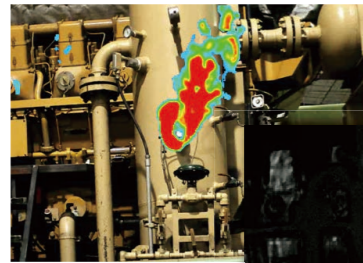


\*Certified as AIMM (Approved Instrument Monitoring Method) by the Colorado state government.

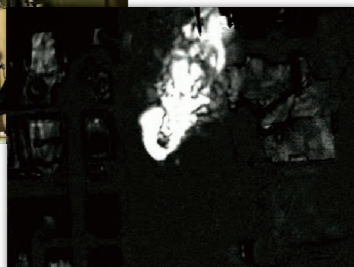
# Inspection Support Solution

## High Detectability: Unique image processing and noise reduction

Leaks are quickly and accurately identified, even from long range. This can include complex equipment, operating under high temperatures, which would otherwise be difficult to notice.



Gas Overlay Mode



Gas Enhanced Mode

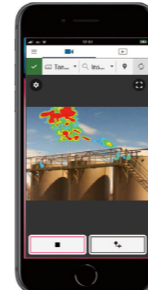
## Enhanced Portability

With its lightweight body and image stabilization function, the camera can be carried and inspected in a hand-held state. A higher degree of freedom to inspect in confined spaces, such as narrow compressor stations or the top of a tank, is now available.



## Large screen display with Wi-Fi connectivity

Connect your tablet, smartphone, or other smart device as an additional display. With this capability, the potential exists for a safety-conscious approach to monitoring a leak.



## Data management service

Inspection data is saved and managed on the secure cloud. Check facility inspection progress by reviewing inspection history. Quickly and easily trace the past inspection record for a specific facility.

